


PREMIER®

UNIFORMS THAT WORK FOR YOU

 **COLLECTION**



BUSINESSWEAR / HOSPITALITYWEAR / CHEFSWEAR / BEAUTYWEAR

CONTENTS

BUSINESSWEAR	6 - 53
SHIRTS & BLOUSES	8 - 25
KNITWEAR	26 - 31
TROUSERS	32 - 35
SECURITY	36 - 39
TIES & SCARVES	40 - 53
HOSPITALITYWEAR	54 - 131
SHIRTS & BLOUSES	56 - 79
TROUSERS & CHINOS	92 - 93
WAISTCOATS	80 - 81
POLO-SHIRTS	84 - 91
APRONS	94 - 127
TABARDS	128 - 131
CHEFSWEAR	132 - 153
CHEF'S JACKETS	134 - 145
CHEF'S T-SHIRT	147
CHEF'S TROUSERS	146
CHEF'S ACCESSORIES	148 - 149
CHEF'S APRONS	150 - 153
BEAUTY & HEALTH	154 - 178
BEAUTY TUNICS	156 - 167
BEAUTY TROUSERS	166
BARBER'S APRONS	168 - 169
BEAUTY APRONS/TABARDS	170 - 175
HEALTH TUNICS & TROUSERS	176 - 178
WHAT'S NEW	4 - 5
ETHICAL POLICY	179
SIZE GUIDE	180
WASH CARE	181
INDEX	182 - 183



DISCOVER THE RANGE



The Blue
CRAB HACK
FOOD

STARTER

SPICY CRAB CAK
with chilli dipping sauce

SCALLOP
with cauliflower

LANGO
garlic

MA

MAINS

LOBSTER THERMIDOR
classic crab shack style £19.50

SOLE
butter £18.50

HERBS £13.50

CRAB £15.50

FOR 2
table £29.90

SEASONAL VEG
with any side plate £9.50

EDWARD'S FRIES
salt & pepper fries £3.50

GARDEN SALAD
with baby leaf herbs £9.50

134-135

LET'S TAKE A LOOK AT WHAT'S NEW IN OUR WORKING WARDROBE FOR 2018





THE LATEST ADDITIONS TO OUR ARTISAN COLLECTION FEATURE INSPIRATIONAL NEW DESIGNS THAT WILL TAKE HOSPITALITY FASHIONS TO THE NEXT LEVEL.

Take a look at our **Chino inspired Aprons** that are designed with the typical style accents from your favourite pair of Chinos. We continue with the denim dream this year with even more quirky Jeans-stitch Aprons and we are very pleased to introduce a stunning **100% real leather Apron** into our collection.

You'll discover a bigger choice of checks in the form of our 'Mulligan', 'Ginmill' and 'Sidehill' Cotton shirts and we have brought in a completely new line of casual roll-sleeve long john tees.

Whilst the heat is on in the kitchen, chef and the team are going to look seriously cool in our new **Denim Chef's Jackets** with matching skull caps and meanwhile, over in the salon, we've added some extra colourways to one of our most popular beauty tunics.

If you're looking for a modern trouser solution, take a walk in our direction and discover our new **Chino Jeans**. They come in five colourways and offer a comfortable, stretchy fit for the wearer.

We really do like to champion the merits of the classic polo shirt at Premier and we are delighted to now offer the next generation in performance polos with the launch of our **Coolchecker™ Coolplus® Polo Shirt**. With exceptional wicking, antibacterial and wash properties, this polo is a great uniform solution that is guaranteed to work as hard as you do!





FROM 9 TO 5

BUSINESSWEAR

A comprehensive collection of shirts, polos, knitwear, trousers, ties and scarfs for the business professional. A mixture of fabrics, colours and styles all with a good sizing range means we have become the one-stop-shop for the nation's corporate dressing requirements.



POPLIN POWER

30 COLOURS



MEN'S SHORT SLEEVE POPLIN SHIRT

PR202

- Formal collar styling
- Left chest open Mitred pocket
- Self-coloured buttons
- Easycare

FABRIC

65% Polyester, 35% Cotton
Weight: 105gsm

SIZES (collar) "/cm

14.5/37, 15/38, 15.5/39.5, 16/41,
16.5/42, 17/43, 17.5/44.5, 18/46,
18.5/47, 19/48, 20/51, 21/53,
22/56, *23/59 (*only available in selected colours)

COLOUR

30 as listed

LADIES' SHORT SLEEVE POPLIN BLOUSE

PR302

- Soft collar styling
- Bust and back darts for a semi fitted appearance
- Rounded bottom hem
- Self-coloured buttons

FABRIC

65% Polyester, 35% Cotton
Weight: 105gsm / 115gsm White

SIZES

6/2XS, 8/XS, 10/S, 12/M, 14/L, 16/XL, 18/2XL,
20/3XL, 22/4XL, 24/5XL, 26/6XL, *28/7XL, *30/8XL
(*only available in selected colours)

COLOUR

30 as listed

**CLASSIC
FIT**



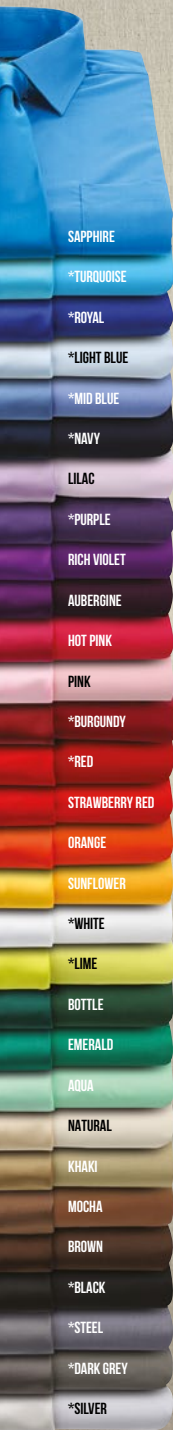


PR302



PR202

LET YOUR SHIRT DO THE TALKING



PR300

30
"COLOURS"





PR200

MEN'S LONG SLEEVE POPLIN SHIRT

PR200

- Formal collar styling
- Left chest open Mitred pocket
- Double button fastening on the cuff
- Easycare

FABRIC

65% Polyester, 35% Cotton
Weight: 105gsm

SIZES (collar) "/>cm

14.5/37, **15**/38,
15.5/39.5, **16**/41,
16.5/42, **17**/43,
17.5/44.5, **18**/46,
18.5/47, **19**/48,
20/51, **21**/53,
22/56, ***23**/59

(*only available in selected colours)

COLOUR

30 as listed

LADIES' LONG SLEEVE POPLIN BLOUSE

PR300

- Soft collar styling
- Bust and back darts for a semi fitted appearance
- Rounded bottom hem
- Double buttons on the cuff

FABRIC

65% Polyester, 35% Cotton
Weight: 105gsm/ White 115gsm

SIZES

6/2XS, **8**/XS, **10**/S, **12**/M,
14/L, **16**/XL, **18**/2XL, **20**/3XL,
22/4XL, **24**/5XL, **26**/6XL,
***28**/7XL, ***30**/8XL

(*only available in selected colours)

COLOUR

30 as listed

**CLASSIC
FIT**

MEN'S LONG SLEEVE FITTED POPLIN SHIRT

PR204

- Formal collar styling
- Optional chest pocket attachment
- Double button fastening on the cuff
- Fitted style

FABRIC

65% Polyester, 35% Cotton
Weight: 105gsm

SIZES (collar) "/cm

14.5/37, 15/38, 15.5/39.5,
16/41, 16.5/42, 17/43,
17.5/44.5

COLOUR

8 as listed



Formal cut collar



Double buttons on cuff



LADIES' THREE QUARTER SLEEVE POPLIN BLOUSE

PR305

- Soft collar styling
- Three quarter sleeve with vented cuff
- Bust and back darts for a semi fitted appearance
- Rounded bottom hem

FABRIC

65% Polyester, 35% Cotton
Weight: 105gsm/115gsm White

SIZES

6/2XS, 8/XS, 10/S, 12/M, 14/L, 16/XL,
18/2XL, 20/3XL, 22/4XL, 24/5XL, 26/6XL
(Size 6 in Black & White only)

COLOUR

7 as listed



POPLIN ALTERNATIVES



PR305



PR204



PR209

PR309

SUPREME
P O P L I N



MEN'S SHORT SLEEVE SUPREME POPLIN SHIRT

PR209

- Offering a heavier fabric weight
- Formal collar styling
- Two button fastening on the collar stand
- Semi-fitted styling

FABRIC

65% Polyester, 35% Cotton
Weight: 125gsm

SIZES (collar) "/cm

**14.5/37, 15/38, 15.5/39.5, 16/41,
16.5/42, 17/43, 17.5/44.5, 18/46,
18.5/47, 19/48**

COLOUR

3 as listed

LADIES' SHORT SLEEVE SUPREME POPLIN BLOUSE

PR309

- Offering a heavier fabric weight
- Soft collar styling
- Two button fastening on the collar stand
- Semi-fitted styling with back and bust darts

FABRIC

65% Polyester, 35% Cotton
Weight: 125gsm

SIZES

**8/XS, 10/S, 12/M, 14/L, 16/XL, 18/2XL,
20/3XL, 22/4XL, 24/5XL, 26/6XL**

COLOUR



**SEMI
FITTED**

SUPREME STYLING

MEN'S LONG SLEEVE SUPREME POPLIN SHIRT

PR207

- Offering a heavier fabric weight
- Formal collar styling
- Two button fastening on the collar stand
- Semi-fitted styling

FABRIC

65% Polyester, 35% Cotton
Weight: 125gsm

SIZES (collar) "/cm

14.5/37, **15**/38, **15.5**/39.5, **16**/41,
16.5/42, **17**/43, **17.5**/44.5, **18**/46,
18.5/47, **19**/48

COLOUR

3 as listed

LADIES' LONG SLEEVE SUPREME POPLIN BLOUSE

PR307

- Offering a heavier fabric weight
- Soft collar styling
- Two button fastening on the collar stand
- Semi-fitted styling

FABRIC

65% Polyester, 35% Cotton
Weight: 125gsm

SIZES

8/XS, **10**/S, **12**/M, **14**/L, **16**/XL, **18**/2XL,
20/3XL, **22**/4XL, **24**/5XL, **26**/6XL

COLOUR

3 as listed

**SEMI
FITTED**





PR207

PR307

SUPREME
P O P L I N

 [®]
PREMIER

UNIFORMS THAT WORK FOR YOU

NEW

PR221

PR321

CHECK INTO STYLE

MEN'S SHORT SLEEVE GINGHAM MICROCHECK SHIRT

PR221

- Popular Gingham Microcheck
- Semi-fitted styling
- Soft collar styling

FABRIC

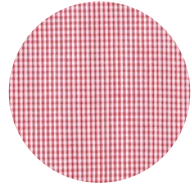
100% Cotton Yarn Dyed Poplin.
Weight: 115gsm

SIZES (call size/chest ")

**XS/30, S/34, M/38, L/42, XL/46,
2XL/50, 3XL/54**

COLOUR

Black/ White, Light Blue/ White,
Red/ White, Navy/White



LADIES' SHORT SLEEVE GINGHAM MICROCHECK SHIRT

PR321

- Soft collar styling
- Microcheck Gingham pattern
- Bust and back darts for a fitted shape

FABRIC

100% Cotton
Weight: 115gsm

SIZES

**8/XS, 10/S, 12/M, 14/L, 16/XL,
18/2XL, 20/3XL**

COLOUR

4 as listed



SQUARED FOR SUCCESS

MEN'S LONG SLEEVE GINGHAM SHIRT

PR220

- Soft collar styling
- Microcheck Gingham pattern
- Double buttons on the cuff
- Semi fitted shirt

FABRIC

100% Cotton
Weight: 115gsm

SIZES (call size/chest ")

XS/30, **S**/34, **M**/38, **L**/42, **XL**/46,
2XL/50, **3XL**/54

COLOUR

4 as listed



LADIES' LONG SLEEVE GINGHAM MICROCHECK SHIRT

PR320

- Soft collar styling
- Microcheck Gingham pattern
- Double buttons on the cuff
- Bust and back darts for a fitted shape

FABRIC

100% Cotton
Weight: 115gsm

SIZES

8/XS, **10**/S, **12**/M, **14**/L, **16**/XL,
18/2XL, **20**/3XL

COLOUR

4 as listed

SEMI
FITTED



PR320

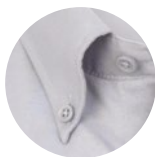
PR220

Signature OXFORD

MEN'S SHORT SLEEVE OXFORD SHIRT

PR236

- Button down collar
- Left chest open Mitred pocket
- Semi-fitted styling
- Cotton rich Oxford fabric



Button down collar
on men's style

FABRIC

70% Cotton, 30% Polyester
Weight: 135gsm

SIZES (collar) "/cm

14.5/37, **15**/38, **15.5**/39.5, **16**/41,
16.5/42, **17**/43, **17.5**/44.5, **18**/46,
18.5/47, **19**/48

COLOUR

4 as listed

LADIES' SHORT SLEEVE OXFORD BLOUSE

PR336

- Soft collar styling
- Semi-fitted styling with bust and back darts
- Rounded bottom hem
- Cotton rich Oxford fabric

FABRIC

70% Cotton, 30% Polyester
Weight: 135gsm

SIZES

8/XS, **10**/S, **12**/M, **14**/L,
16/XL, **18**/2XL, **20**/3XL,
22/4XL, **24**/5XL, **26**/6XL

COLOUR

4 as listed



**SEMI
FITTED**



PR236

PR336

PR234

PR334

Signature OXFORD

CLASSIC STYLES WITH A MODERN TWIST

MEN'S LONG SLEEVE SIGNATURE OXFORD SHIRT

PR234

- Button down collar
- Left breast open Mitred pocket
- Semi-fitted styling
- Cotton rich Oxford fabric

FABRIC

70% Cotton, 30% Polyester
Weight: 135gsm

SIZES (collar) "/>cm

14.5/37, 15/38, 15.5/39.5, 16/41,
16.5/42, 17/43, 17.5/44.5, 18/46,
18.5/47, 19/48

COLOUR

4 as listed

LADIES' LONG SLEEVE SIGNATURE OXFORD BLOUSE

PR334

- Soft collar styling
- Semi-fitted styling with bust and back darts
- Rounded bottom hem
- Cotton rich Oxford fabric

FABRIC

70% Cotton, 30% Polyester
Weight: 135gsm

SIZES

8/XS, 10/S, 12/M, 14/L, 16/XL, 18/2XL,
20/3XL, 22/4XL, 24/5XL, 26/6XL

COLOUR

4 as listed



SEMI
FITTED

GET KNITTED OUT

HIS AND HERS STYLING

MEN'S V-NECK KNITTED SWEATER

PR694

- Cotton rich long sleeve sweater
- V-neck styling
- Fine gauge knit
- Ribbed knit cuffs and hem

FABRIC

55% Cotton, 45% Acrylic
Weight: 12 gauge knit

SIZES

2XS, XS, S, M, L, XL, 2XL, 3XL, 4XL

COLOUR

8 as listed



LADIES' V-NECK KNITTED CARDIGAN

PR697

- Cotton rich ladies' cardigan
- V-neck styling
- Fine gauge knit
- Seven button fastening

FABRIC

55% Cotton, 45% Acrylic
Weight: 12 gauge knit



SIZES

**8/XS, 10/S, 12/M, 14/L, 16/XL, 18/2XL,
20/3XL, 22/4XL, 24/5XL**

COLOUR

8 as listed



PR697

PR694

8
COLOURS

PR698



PR699



LAYERS OF STYLE

MEN'S SLEEVELESS SWEATER

PR699

- V-neck styling
- Ribbed knit arm cuff, neckline and hem
- Cotton rich

FABRIC

55% Cotton, 45% Acrylic
Weight: 12 gauge knit.

SIZES

XS, S, M, L, XL, 2XL, 3XL, 4XL

COLOUR

Black, Navy, Charcoal



*Men's sweater
fabric detail*



*Ladies' cardigan
button detail*

LADIES' LONG LENGTH KNITTED CARDIGAN

PR698

- Cotton rich ladies' cardigan
- V-neck styling
- Seven button fastening
- Two front patch pockets

FABRIC

55% Cotton, 45% Acrylic
Weight: 12 gauge knit

SIZES

**8/XS, 10/S, 12/M, 14/L,
16/XL, 18/2XL, 20/3XL,
22/4XL, 24/5XL**

COLOUR

3 as listed



LADIES' V-NECK KNITTED SWEATER

PR696

- Cotton rich long sleeve sweater
- V-neck styling
- Fine gauge knit
- Ribbed knit cuffs and hem

FABRIC

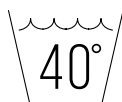
55% Cotton, 45% Acrylic
Weight: 12 gauge knit

SIZES

8/XS, 10/S, 12/M, 14/L,
16/XL, 18/2XL, 20/3XL,
22/4XL, 24/5XL,

COLOUR

3 as listed



MEN'S QUARTER ZIP KNITTED SWEATER

PR695

- Cotton rich long sleeve sweater
- Quarter zipped
- Fine gauge knit
- Ribbed knit collar, cuffs and hem

FABRIC

55% Cotton, 45% Acrylic
Weight: 12 gauge knit

SIZES

XS, S, M, L, XL, 2XL, 3XL, 4XL

COLOUR

3 as listed



COTTON RICH KNITWEAR

PR695

PR696



TAILORED FIT



PR526

STRAIGHT FIT



PR536

STRAIGHT FIT



PR520

YOU WEAR THE TROUSERS

MEN'S TAILORED TROUSERS

PR526

- Flat fronted trouser offering a more tailored fit
- YKK zip fly with button, hook 'n' bar fastening
- Two swing hip pockets
- Rear jetted pocket

FABRIC

100% Polyester
Weight: 185gsm

SIZES

30 - 44" / 76 -110cm waist.
Regular leg 31"/79 cm and Long leg 34"/86 cm available

COLOUR



BLACK

LADIES' 'IRIS' STRAIGHT LEG TROUSER

PR536

- Trousers with a deep waistband
- YKK fastening zip
- Crossover waistband with two button fastening
- No pockets

FABRIC

100% Polyester
Weight: 185gsm

SIZES

8 - 24 / XS-5XL
Regular leg 31"/79 cm and Long leg 34"/86 cm available

COLOUR



BLACK

MEN'S BUSINESS TROUSERS

PR520

- Single pleated front
- YKK zip fly with button, hook 'n' bar fastening
- Two swing hip pockets
- Rear jetted pocket

FABRIC

100% Polyester
Weight: 185gsm

SIZES

30 - 44" / 76 -110cm waist.
Regular leg 31"/79 cm and Long leg 34"/86 cm available

COLOUR



BLACK

DARK NAVY



TAPERED FIT

PR538



SLIM FIT

PR528



BOOT CUT

PR530

LADIES' TAPERED LEG TROUSER

PR538

- Tapered fit that follows the contours of the leg
- YKK fastening zip
- Cross-over waistband with two button fastening
- Two non-functional rear vented pockets for styling

FABRIC

100% Polyester
Weight: 185gsm

SIZES

8 - 24 / XS-5XL
Regular leg 31"/79 cm and Long leg 34"/86 cm available

COLOUR



BLACK

MEN'S SLIM FIT POLYESTER TROUSERS

PR528

- Trousers offering a slimmer fit shape around the leg
- YKK zip fly with button, hook 'n' bar fastening
- Two swing hip pockets
- Rear jetted pocket

FABRIC

100% Polyester
Weight: 185gsm

SIZES

30 - 44" / 76-110cm waist.
Regular leg 31"/79 cm and Long leg 34"/86 cm available

COLOUR



BLACK

LADIES' BUSINESS TROUSERS

PR530

- Single pleated front
- YKK zip fly with button, hook 'n' bar fastening
- Boot cut style
- Belt loops

FABRIC

100% Polyester
Weight: 185gsm



SIZES

8 - 24 / XS-5XL
Regular leg 31"/79 cm and Long leg 34"/86 cm available

COLOUR



BLACK

DARK NAVY



60°

PR560

PERFORMANCE 'CHINO' JEAN

MEN'S PERFORMANCE 'CHINO' JEAN

PR560

MEN'S SIZES

XS/30, **S**/32, **M**/34, **L**/36, **XL**/38,
2XL/40, **3XL**/42, **4XL**/44
(Regular 31" & Long leg 34")

LADIES' PERFORMANCE 'CHINO' JEAN

PR570

- Classic cut Chino with two front pockets
- Rivet detail
- Two patch pockets to the rear
- Belts loops to facilitate a belt.
- Covered YKK zip fly with single metal button fastening on the waistband
- Stretch fabric capability for maximum comfort
- Exceptional durability and wash performance

FABRIC

63% Polyester, 35% Cotton, 2% Elastane.
Weight: 260gsm

LADIES' SIZES

XS/08, **S**/10, **M**/12, **L**/14, **XL**/16, **2XL**/18,
3XL/20, **4XL**/22, **5XL**/24
(Regular 31" & Long leg 34")

COLOUR

5 as listed



SECURITY

TAKE A CLOSER INSPECTION

MEN'S LONG SLEEVE PILOT SHIRT

PR210

- Formal collar styling
- Two Mitred button down chest pockets
- Combined pen pocket on the left chest pocket
- Tabs for application of Epaulettes on the shoulders (page 39)

FABRIC

65% Polyester, 35% Cotton
Weight: 105gsm

CLASSIC
FIT

SIZES (collar) "/>cm

14.5/37, **15**/38, **15.5**/39.5, **16**/41,
16.5/42, **17**/43, **17.5**/44.5, **18**/46,
18.5/47, **19**/48

COLOUR

3 as listed



LADIES' LONG SLEEVE PILOT SHIRT

PR310

- Formal collar styling
- Two Mitred button down breast pockets
- Combined pen pocket on the left breast pocket
- Tabs for application of Epaulettes on the shoulders (page 39)

FABRIC

65% Polyester, 35% Cotton
Weight: 115gsm

SIZES

8/XS, **10**/S, **12**/M, **14**/L, **16**/XL, **18**/2XL,
20/3XL, **22**/4XL, **24**/5XL, **26**/6XL

COLOUR



WHITE

PR310

PR210



PR212

PR312

LADIES' SHORT SLEEVE PILOT SHIRT

PR312

- Formal collar styling
- Two Mitred button down breast pockets
- Combined pen pocket on the left breast pocket
- Tabs for application of Epaulettes on the shoulders (page 39)

FABRIC

65% Polyester, 35% Cotton
Weight: 115gsm

SIZES

8/XS, 10/S, 12/M, 14/L, 16/XL, 18/2XL, 20/3XL,
22/4XL, 24/5XL, 26/6XL

COLOUR



BLACK WHITE

MEN'S SHORT SLEEVE PILOT SHIRT

PR212

- Formal collar styling
- Two Mitred button down chest pockets
- Combined pen pocket on the left chest pocket
- Tabs for application of Epaulettes on the shoulders (page 39)

FABRIC

65% Polyester, 35% Cotton
VWeight: 105gsm

SIZES (collar) "/cm

14.5/37, 15/38, 15.5/39.5, 16/41,
16.5/42, 17/43, 17.5/44.5, 18/46,
18.5/47, 19/48

COLOUR



BLACK WHITE LIGHT BLUE

**CLASSIC
FIT**



MEN'S SECURITY TROUSERS

PR523

- Metal 'D' ring attached to the front belt loop
- YKK zip fly with button, hook 'n' bar fastening
- Two swing hip pockets
- Rear jetted pocket

FABRIC

100% Polyester
Weight: 215gsm

SIZES

30 - 42" / 76 - 106cm waist
Regular leg 31"/79cm and
Long leg 34"/86cm

COLOUR



BLACK

WORK TIE

PR700

- Plain tie
- Length of 57"/144cm
- Blade width of 3.25"/8cm
- Clip-on version, PR710

FABRIC

100% Polyester
Wash: Wipe clean only

COLOUR

6 as listed



CLIP-ON WORK TIE

PR710

- Clip-on version of PR700
- Length of 20"/50cm
- Blade width of 3.25"/8cm
- Steel clip

FABRIC

100% Polyester
Wash: Wipe clean only

COLOUR

6 as listed



EPAULETTES

PR715

- Velcro fastening
- One size
- Embroidery area, 9cm x 5cm
- Complements PR700, PR710, PR711

FABRIC

100% Polyester
Wash: Wipe clean only



BLACK NAVY



LADIES' CLIP-ON CRAVAT

PR711

- Steel clip attachment
- Complements PR710 Clip-on tie

FABRIC

100% Polyester
Wash: Wipe clean only

COLOUR



BLACK





PR750

40

COLOURS

STATEMENT TIES



SATIN TIE

PR750

- Plain satin tie
- Blade width 3.34" / 8.5cm
- Length 57" / 144cm
- Clip-on version, PR755

FABRIC

100% Polyester
Wash: 30°C domestic wash

COLOURS

40 as listed



CLIP-ON SATIN TIE

PR755

- Clip-on version of PR750
- Steel clip
- Blade width 3.34" / 8.5cm
- Length 20" / 50cm

FABRIC

100% Polyester
Wash: Hand wash only

COLOURS

40 as listed

NECKWEAR

TO GET YOU NOTICED



'COLOURS COLLECTION' LADIES' CHIFFON SCARF

PR740

- Lightweight chiffon
- Width 6.5" / 16.5cm
- Length 38.5" / 98cm
- Complements PR750 men's tie

FABRIC

100% Polyester
Wash: Hand wash only

COLOURS

40 as listed





40
"COLOURS"

PR740

'COLOURS'

ORIGINALS

'COLOURS COLLECTION' PLAIN BUSINESS SCARF

PR730

- Width 10"/25cm
- Length 55"/140cm
- Complements PR765 men's tie

FABRIC

100% Polyester
Wash: Hand wash only

COLOURS

22 as listed



'COLOURS COLLECTION' FASHION TIE

PR765

- Tie offering a more matt appearance in comparison to PR750
- Blade width 4"/10cm
- Length 57"/144cm

FABRIC

100% Polyester
Wash: 40°C domestic wash

COLOURS

18 as listed



'COLOURS COLLECTION' CLIP-ON FASHION TIE

PR785

- Clip-on version
- Blade width 4"/10cm
- Length 18"/47cm

FABRIC

100% Polyester
Wash: Hand wash only

COLOURS

18 as listed



A man and a woman are posed against a dark wood-paneled background. The man, on the left, is wearing a white long-sleeved dress shirt and a red necktie. The woman, on the right, is wearing a white long-sleeved dress shirt with a red scarf. Both are looking towards the camera. The man is sitting on a brown leather chair.

PR765

PR730

WAFFLE STRIPE

PR783





MICRO WAFFLE

PR780



PUPPY TOOTH

PR787



PR780, PR783, PR787

- Patterned tie
- Blade width of 3"/7.5cm
- Length of 57"/144cm

FABRIC

100% Polyester
Wash: Hand wash only

PATTERNED TIES



CLUB STRIPE

PR786



SQUARES

PR788



MICRO DOT

PR781



PR786, PR788, PR781

- Patterned tie
- Blade width of 3"/7.5cm
- Length of 57"/144cm

FABRIC

100% Polyester
Wash: Hand wash only

PR786



KNITTED

SLIM & STYLISH TIE

PR789

SLIM KNITTED TIE

PR789

- Blade width 2" / 5cm
- Length 58" / 147cm
- Hand wash only

FABRIC

100% Polyester

COLOUR

6 as listed





SPORTS STRIPE

PR784



DOUBLE STRIPE

PR782



PR782, PR784

- Patterned tie
- Blade width of 3"/7.5cm
- Length of 57"/144cm

FABRIC

100% Polyester
Wash: Hand wash only



SLIM TIE

PR793

- Satin weave
- Blade width 2"/5cm
- Length 58"/147cm

FABRIC

100% Polyester

COLOURS

5 colours as listed



CANDY STRIPE TIE

PR766

HORIZONTAL STRIPE TIE

PR722

- Patterned ties
- Length 57" / 144cm
- Blade width 4" / 10cm

FABRIC

100% Polyester
Wash: 30°C domestic wash



BOW TIE

PR705

- Satin weave bow tie
- Hook and bar fastening.

FABRIC

100% Polyester



MULTI STRIPE SCARF

PR770

- Width 10" / 25cm
- Length 55" / 120cm

FABRIC

100% Polyester
Wash: Hand wash only



MULTI STRIPE TIE

PR760

- Length 57" / 144cm
- Blade width 4" / 10cm

FABRIC

100% Polyester
Wash: 30°C domestic wash



SILK TIES

SILK TIE

PR795

- Luxurious silk tie
- Length 57" / 144cm
- Blade width 4" / 10cm

FABRIC

100% Silk twill

COLOURS

7 colours as listed



PR772

PR762

FOUR STRIPE SCARVES & TIES

PR762 (TIE)

- Length 57"/ 144cm
- Blade width 4"/ 10cm

FABRIC

100% Polyester
Wash: 30°C domestic wash

PR772 (SCARF)

- Width 10"/ 25cm
- Length 55"/ 120cm

FABRIC

100% Polyester
Wash: Hand wash only



NAVY/
BLUE

NAVY/
RED

BLACK/
SILVER

ORANGE/
CREAM

RED/
GOLD

RED/
SILVER

BURGUNDY/
WHITE

The home of **HOSPITALITYWEAR**

As the appetite for informal dining concepts continues, so does the demand for staff uniforms that are cool, casual and reflective of the latest high street trends.

We've taken our collection of Artisan Aprons to the next level with all sorts of quirky design features and beautiful fabrics for style and practicality.

We continue to be all about the colour at Premier so mix and match between colours and styles and create an inspirational uniform that raises the bar in your establishment!





Vintage INSPIRED WORKWEAR

EST.
1999

MULLIGAN

'MULLIGAN' CHECK MEN'S COTTON LONG SLEEVE SHIRT

PR250

- Roll sleeve option with button and tab fastening on the upper arm
- Narrow soft collar styling
- Semi fitted style for men
- Fashionable check pattern

FABRIC

100% Cotton Yarn Dyed Poplin
Weight: 115gsm

SIZES (call size/chest ")

S/34, **M**/38, **L**/42, **XL**/46, **2XL**/50, **3XL**/54

COLOUR

4 as listed

'MULLIGAN' CHECK LADIES' LONG SLEEVE COTTON SHIRT

PR350

- Roll sleeve option with button and tab fastening on the upper arm
- Narrow soft collar styling
- Semi fitted style for ladies
- Fashionable check pattern

FABRIC

100% Cotton Yarn Dyed Poplin
Weight: 115gsm

SIZES

XS/8, **S**/10, **M**/12, **L**/14, **XL**/16, **2XL**/18

COLOUR

4 as listed



PR350



PR250

NEW

PR256

PR356

NEW

Vintage INSPIRED WORKWEAR

EST.
1999

SIDEHILL

MEN'S LONG SLEEVE 'SIDEHILL' CHECK COTTON SHIRT

PR256

- Roll sleeve option with button and tab fastening on the upper arm
- Narrow soft collar styling
- Contrast colour check pattern
- Semi fitted style for men

FABRIC

100% Cotton Yarn Dyed Poplin
Weight: 115gsm

SIZES (call size/chest ")

S/34, **M**/38, **L**/42, **XL**/46, **2XL**/50, **3XL**/54

COLOUR

Navy/Red

LADIES' LONG SLEEVE 'SIDEHILL' CHECK COTTON SHIRT

PR356

- Roll sleeve option with button and tab fastening on the upper arm
- Narrow soft collar styling
- Contrast colour check pattern
- Semi fitted style for ladies

FABRIC

100% Cotton yarn Dyed Poplin
Weight: 115gsm

SIZES

XS/8, **S**/10, **M**/12, **L**/14,
XL/16, **2XL**/18

COLOUR

Navy/Red



Button tab fastening

Vintage INSPIRED WORKWEAR

EST.
1999

GINMILL

'GINMILL' CHECK MEN'S COTTON LONG SLEEVE SHIRT

PR254

- Roll sleeve option with button and tab fastening on the upper-arm
- Narrow soft collar styling
- Semi fitted style for men
- Fashionable check pattern

FABRIC

100% Cotton Yarn Dyed Poplin
Weight: 115gsm

SIZES (call size / chest ")

S/34, **M**/38, **L**/42, **XL**/46, **2XL**/50, **3XL**/54

COLOUR

Black/White

SEMI
FITTED

'GINMILL' CHECK LADIES' COTTON LONG SLEEVE SHIRT

PR354

- Roll sleeve option with button and tab fastening on the upper-arm
- Narrow soft collar styling
- Semi fitted style for ladies
- Fashionable check pattern

FABRIC

100% Cotton Yarn Dyed Poplin
Weight: 115gsm

SIZES

XS/8, **S**/10, **M**/12, **L**/14,
XL/16, **2XL**/18

COLOUR

Black/White



Narrow soft collar



PR354



PR254

NEW

PR320

PR220



GO GINGHAM

MEN'S LONG SLEEVE GINGHAM MICROCHECK SHIRT

PR220

- Soft collar styling
- Microcheck Gingham pattern
- Double buttons on the cuff
- Semi fitted shirt

FABRIC

100% Cotton
Weight: 115gsm

SIZES (call size/ chest to fit *)

XS/30, **S**/34, **M**/38, **L**/42 **XL**/46,
2XL/50, **3XL**/54

COLOUR

4 as listed

SEMI
FITTED



LADIES' LONG SLEEVE GINGHAM MICROCHECK SHIRT

PR320

- Soft collar styling
- Microcheck Gingham pattern
- Double buttons on the cuff
- Bust and back darts for a fitted shape

FABRIC

100% Cotton
Weight: 115gsm

SIZES

8/XS, **10**/S, **12**/M, **14**/L, **16**/XL,
18/2XL, **20**/3XL

COLOUR

4 as listed

SHORT SLEEVE CHECK SHIRTS

MEN'S SHORT SLEEVE GINGHAM MICROCHECK SHIRT

PR221

- Popular Gingham Microcheck
- Semi-fitted styling
- Soft collar styling

FABRIC

100% Cotton
Weight: 115gsm

SIZES (call size/chest to fit *)

XS/30, **S**/34, **M**/38, **L**/42, **XL**/46, **2XL**/50,
3XL/54

COLOUR

4 as listed

SEMI
FITTED



LADIES' SHORT SLEEVE GINGHAM MICROCHECK SHIRT

PR321

- Soft collar styling
- Microcheck Gingham pattern
- Bust and back darts for a fitted shape

FABRIC

100% Cotton
Weight: 115gsm

SIZES

8/XS, **10**/S, **12**/M, **14**/L, **16**/XL,
18/2XL, **20**/3XL

COLOUR

4 as listed

NEW

PR221

PR321



POPLIN

LONG SLEEVE

MEN'S LONG SLEEVE POPLIN SHIRT

PR200

- Formal collar styling
- Left chest open Mitred pocket
- Double button fastening on the cuff
- Easycare

FABRIC

65% Polyester, 35% Cotton
Weight: 105gsm

SIZES (collar) "/>cm

14.5 /37,	15 /38,	15.5 /39.5,	16 /41,
16.5 /42,	17 /43,	17.5 /44.5,	18 /46,
18.5 /47,	19 /48,	20 /51,	21 /53,
22 /56,	*23 /59		

COLOUR

30 as listed

LADIES' LONG SLEEVE POPLIN BLOUSE

PR300

- Soft collar styling
- Bust and back darts for a semi fitted appearance
- Rounded bottom hem
- Double buttons on the cuff

FABRIC

65% Polyester, 35% Cotton
Weight: 105gsm/ White 115gsm

SIZES

6/2XS, **8**/XS, **10**/S, **12**/M, **14**/L, **16**/XL, **18**/2XL,
20/3XL, **22**/4XL, **24**/5XL, **26**/6XL, ***28**/7XL, ***30**/8XL

COLOUR

30 as listed

CLASSIC
FIT





PR200

PR300

30
COLOURS

PR202

**CLASSIC
FIT**

PR302

POPLIN

SHORT SLEEVE

MEN'S SHORT SLEEVE POPLIN SHIRT

PR202

- Formal collar styling
- Left chest open Mitred pocket
- Self-coloured buttons
- Easycare

FABRIC

65% Polyester, 35% Cotton
Weight: 105gsm

SIZES (collar) "/>cm

14.5/37, 15/38, 15.5/39.5, 16/41,
16.5/42, 17/43, 17.5/44.5, 18/46,
18.5/47, 19/48, 20/51, 21/53,
22/56, *23/59

(*only available in selected colours)

COLOUR

30 as listed

LADIES' SHORT SLEEVE POPLIN BLOUSE

PR302

- Soft collar styling
- Bust and back darts for a semi fitted appearance
- Rounded bottom hem
- Self-coloured buttons

FABRIC

65% Polyester, 35% Cotton
Weight: 105gsm / 115gsm White

SIZES

6/2XS, 8/XS, 10/S, 12/M, 14/L, 16/XL, 18/2XL,
20/3XL, 22/4XL, 24/5XL, 26/6XL, *28/7XL, *30/8XL

(*only available in selected colours)

COLOUR

30 as listed



POPLIN

ALTERNATIVES

LADIES' THREE QUARTER SLEEVE POPLIN BLOUSE

PR305

- Soft collar styling
- Three quarter sleeve with vented cuff
- Bust and back darts for a semi fitted appearance
- Rounded bottom hem

FABRIC

65% Polyester, 35% Cotton
Weight: 105gsm/115gsm White

SIZES

6/2XS, 8/XS, 10/S, 12/M, 14/L, 16/XL,
18/2XL, 20/3XL, 22/4XL, 24/5XL, 26/6XL
(Size 6 in Black & White only)

COLOUR

7 as listed

CLASSIC
FIT



MEN'S LONG SLEEVE FITTED POPLIN SHIRT

PR204

- Formal collar styling
- Double button fastening on the cuff
- Fitted style

FABRIC

65% Polyester, 35% Cotton
Weight: 105gsm

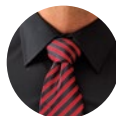
SIZES (collar) "/>cm

14.5/37, 15/38, 15.5/39.5, 16/41,
16.5/42, 17/43, 17.5/44.5

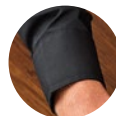
COLOUR

8 as listed

FITTED
STYLE



Formal cut collar



Double buttons on cuff

PR305

PR204





PR322

PR222

HOSPITALITY IT'S IN THE JEANS

MEN'S JEANS STITCH DENIM SHIRT

PR222

- Contrast stitch details
- Left chest button down pocket
- Buttoned cuff and sleeve guard for roll back option on the lower arm

FABRIC

100% Ringspun Cotton Denim
Weight: 155gsm

SIZES (call size/chest ")

XS/30, **S**/34, **M**/38, **L**/42, **XL**/46,
2XL/50, **3XL**/54

COLOUR

2 as listed



LADIES' JEANS STITCH DENIM SHIRT

PR322

- Contrast stitch details
- Two button down breast pockets
- Buttoned cuff and sleeve guard for roll back option on the lower arm

FABRIC

100% Ringspun Cotton Denim
Weight: 155gsm

SIZES

8/XS, **10**/S, **12**/M, **14**/L, **16**/XL,
18/2XL, **20**/3XL

COLOUR

2 as listed



SEMI
FITTED

Cross-Dye

BAR SHIRT

MEN'S ROLL SLEEVE 'CROSS DYE' POPLIN SHIRT

PR217

- Soft collar styling
- Cross dye textured fabric appearance
- Long sleeve option with two button fastening on the cuff
- Roll-up sleeve option with button fastening on the upper arm

FABRIC

65% Polyester, 35% Cotton
Weight: 105gsm

SIZES (call size / chest ")

XS/30, **S**/34, **M**/38, **L**/42, **XL**/46,
2XL/50, **3XL**/54

COLOUR

2 as listed



- Roll up sleeve
- Button fastening

LADIES' ROLL SLEEVE 'CROSS DYE' POPLIN SHIRT

PR317

- Soft collar styling
- Cross dye textured fabric appearance
- Long sleeve option with two button fastening on the cuff
- Roll-up sleeve option with button fastening on the upper arm

FABRIC

65% Polyester, 35% Cotton
Weight: 105gsm

SIZES

8/XS, **10**/S, **12**/M, **14**/L, **16**/XL,
18/2XL, **20**/3XL

COLOUR

2 as listed

SEMI
FITTED



PR217

PR317

PR206

PR306



Roll-Sleeve

BAR SHIRT

MEN'S ROLL SLEEVE POPLIN SHIRT

PR206

- Single button cuff fastening
- Button and tab on upper arm to secure rolled sleeve in place
- Left chest vented pocket
- Soft collar styling

FABRIC

65% Polyester, 35% Cotton
Weight: 105gsm

SIZES (call size /chest *)

S/34, **M**/38, **L**/42, **XL**/46, **2XL**/50

COLOUR

Black



LADIES' ROLL SLEEVE POPLIN SHIRT

PR306

- Bust and back darts
- Button and tab on upper arm to secure rolled sleeve in place
- Left chest vented pocket
- Soft collar styling

FABRIC

65% Polyester, 35% Cotton
Weight: 105gsm

SIZES

XS, S, M, L, XL, 2XL

COLOUR

Black



CLASSIC
FIT

Friday

BAR SHIRT

MEN'S LONG SLEEVE FITTED 'FRIDAY BAR SHIRT'

PR214

- Soft collar styling
- Contrast fabric tape on the inside collar stand
- Buttoned cuff and sleeve guard for roll back option on the lower arm
- Fitted shirt

FABRIC

65% Polyester, 35% Cotton
Weight: 105gsm

SIZES (call size/ chest ")

XS/30, **S**/34, **M**/38, **L**/42, **XL**/46, **2XL**/50

COLOUR

2 as listed



- Soft collar
- Trim detail

LADIES' LONG SLEEVE FITTED 'FRIDAY BAR SHIRT'

PR314

- Soft collar styling
- Contrast fabric tape on the inside collar stand
- Buttoned cuff and sleeve guard for roll back option on the lower arm
- Fitted shirt with bust and back darts

FABRIC

65% Polyester, 35% Cotton
Weight: 105gsm

SIZES (Call size)

XS/8, **S**/10, **M**/12, **L**/14, **XL**/16, **2XL**/18

COLOUR

2 as listed

**FITTED
STYLE**



PR214

PR314



PR621

PR620

WAISTCOATS
SERVICE READY

MEN'S HOSPITALITY WAISTCOAT

PR620

- Self-fabric back
- Two functional watch pockets
- Five button fastening
- Easy-care

FABRIC

65% Polyester, 35% Cotton
Weight: 195gsm

SIZES

S, M, L, XL, 2XL

COLOUR

1 as listed



LADIES' HOSPITALITY WAISTCOAT

PR621

- Self-fabric back
- Two functional watch pockets
- Four button fastening
- Easy-care

FABRIC

65% Polyester, 35% Cotton
Weight: 195gsm

SIZES

S, M, L, XL, 2XL

COLOUR

1 as listed



MEN'S LINED POLYESTER WAISTCOAT

PR622

- Satin back
- Two functional watch pockets
- Five button fastening
- Back adjuster

FABRIC

100% Polyester
Weight: 185gsm

SIZES

2XS, XS, S, M, L, XL, 2XL

COLOUR

Black

PR622

PR623

LADIES' LINED POLYESTER WAISTCOAT

PR623

- Satin back
- Two functional watch pockets
- Four button fastening
- Back adjuster

FABRIC

100% Polyester
Weight: 185gsm

SIZES

2XS, XS, S, M, L, XL, 2XL

COLOUR

Black



LONG-JOHN

ROLL SLEEVE TEE

MEN'S LONG-JOHN ROLL SLEEVE TEE

PR218

- Roll-sleeve with button and tab fastening on the upper arm
- Round neck with three button placket
- Ribbed bound neck and cuffs
- Soft and stretchy fabric feel

FABRIC

82% Polyester, 14% Viscose, 4% Elastane, 190gsm. White/Navy, Yarn Dyed stripe detail.

SIZES

XS, S, M, L, XL, 2XL, 3XL

COLOUR

White, White/Navy, Grey Marl, Indigo, Black

LADIES' LONG-JOHN ROLL SLEEVE TEE

PR318

- Roll-sleeve with button and tab fastening on the upper arm
- Round neck with three button placket
- Ribbed bound neck and cuffs
- Soft and stretchy fabric feel

FABRIC

82% Polyester, 14% Viscose, 4% Elastane, 190gsm. White/Navy, Yarn Dyed stripe detail

SIZES

XS, S, M, L, XL, 2XL

COLOUR

White, White/Navy, Grey Marl, Indigo, Black



PR318



COFFEE.

.....	2.40
.....	2.90
.....	3.10

BL	
AM	
RO	
SAN	
GU	
KEN	
MAL	
JAMAIC	IN

PR.218

2.40

NEW

NEW

PR630

PR632

COOL[®]
CHECKER **Plus**

NEXT GENERATION

PERFORMANCE POLO

MEN'S COOLCHECKER™ PLUS PIQUE POLO - COOLPLUS®

PR630

- Ribbed knit collar and cuffs
- 3 button placket, self coloured
- Side panels for semi fitted styling
- Double pique knit-Snag resistant, crease resistant, shrink resistant
- CoolPlus® wicking yarn for comfort
- Quick dry for everyday use
- Excellent colour retention wash after wash
- Silvadur™ antibacterial finish for odour resistance

FABRIC

100% Coolplus Polyester Pique.
Weight: 185gsm

SIZES (call size/chest *)
S/34, M/38, L/42, XL/46, 2XL/50, 3XL/52,
4XL/54, *5XL/56, *6XL/58
 (*only available in selected colours)

COLOUR

16 as listed

LADIES' COOLCHECKER™ PLUS PIQUE POLO - COOLPLUS®

PR632

- Ribbed knit collar and cuffs
- 3 button placket, self coloured
- Side panels for semi fitted styling
- Double pique knit-Snag resistant, crease resistant, shrink resistant
- CoolPlus® wicking yarn for comfort
- Quick dry for everyday use
- Excellent colour retention wash after wash
- Silvadur™ antibacterial finish for odour resistance

FABRIC

100% Coolplus Polyester Pique.
Weight: 185gsm

SIZES
XS/8, S/10, M/12, L/14, XL/16, 2XL/18,
****3XL/20, **4XL/22**
 (**only available in selected colours)

COLOUR

16 as listed



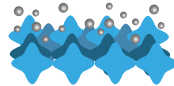
AIR
flows through the fabric.



MOISTURE
drawn away from the skin.



FIBRE
that uses surface dimensional channel technology.



Silvadur™
ANTIMICROBIAL
 which releases silver ions that
 destroy the bacteria that
 causes odour, material
 degradation and discolouration.

POLO SHIRTS

24
COLOURS*

MEN'S COOLCHECKER PIQUE POLO

PR615

- Side panels for fitted shape
- Ribbed knit collar
- Three button placket
- Moisture management properties

FABRIC

100% Polyester pique knit
Weight: 155gsm

SIZES (call size/chest ")

S/34, **M**/38, **L**/42, **XL**/46, **2XL**/50,
3XL/52, **4XL**/54, ***5XL**/56
*(*only available in selected colours)*

COLOUR

24 as listed

LADIES' COOLCHECKER PIQUE POLO

PR616

- Side panels for fitted shape
- Ribbed knit collar
- Three button placket
- Moisture management properties

FABRIC

100% Polyester pique knit
Weight: 155gsm

SIZES

8/XS, **10**/S, **12**/M,
14/L, **16**/XL, **18**/2XL

COLOUR

24 as listed





PR615

PR616

COOL[®]
CHECKER

PR618

PR619

COOL®
CHECKER

CONTRAST POLO

MEN'S CONTRAST TIPPED COOLCHECKER POLO

PR618

- Side panels for fitted shape
- Ribbed knit collar and cuffs
- Three button placket
- Contrast trim on collar, placket and sleeves

FABRIC

100% Polyester pique knit
Weight: 155gsm

SIZES (coll size/chest *)
S/34, **M**/38, **L**/42, **XL**/46, **2XL**/50,
3XL/52, **4XL**/54

COLOUR

12 as listed

LADIES' CONTRAST TIPPED COOLCHECKER POLO

PR619

- Side panels for fitted shape
- Ribbed knit collar and cuffs
- Three button placket
- Contrast trim on collar, placket and sleeves

FABRIC

100% Polyester pique knit
Weight: 155gsm

SIZES
8/XS, **10**/S, **12**/M, **14**/L, **16**/XL, **18**/2XL

COLOUR

12 as listed



MEN'S LONG SLEEVE COOLCHECKER PIQUE POLO

PR617

- Three button placket
- Side panels for a fitted shape
- Moisture management wicking properties
- Ribbed knit collar and cuffs

FABRIC

100% Polyester Pique
Weight: 155gsm
Wash: 40°C domestic wash

SIZES (call size/chest ")
XS/30, S/34, M/38,
L/42, XL/46, 2XL/50,
3XL/52, 4XL/54

COLOUR
2 as listed



MEN'S STUDDED POLO

PR610

- Three pop stud placket
- Extra body length
- Durable pique knit construction
- Ribbed knit collar

FABRIC

65% Polyester, 35% Cotton
Weight: 200gsm
Wash: 50°C domestic wash

SIZES (call size/chest ")
S/34, M/38, L/42, XL/46,
2XL/50, 3XL/52

COLOUR
4 as listed



COOL[®]
CHECKER

PR617

PR610



COOLCHECKER STUDED POLO

PR612

- Two pop stud fastening on the placket
- Extra body length
- Moisture management wicking properties
- Self-fabric collar

FABRIC

100% Polyester Pique
Weight: 140gsm
Wash: 60°C domestic wash

SIZES (call size/chest *)

XS/30, **S**/34, **M**/38, **L**/42, **XL**/46,
2XL/50, **3XL** /52

COLOUR

9 as listed



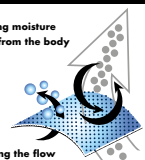
SNAPPY STYLES



PR612

**COOL
CHECKER®**

Drawing moisture
away from the body



Allowing the flow
of air through the fabric,
fast dry and crease resistant.





PR560

PR570

60°

PERFORMANCE 'CHINO' JEAN

MEN'S PERFORMANCE 'CHINO' JEAN

PR560

- Classic cut Chino with two front pockets
- Rivet detail
- Two patch pockets to the rear
- Belts loops to facilitate a belt.
- Covered YKK zip fly with single metal button fastening on the waistband
- Stretch fabric capability for maximum comfort
- Exceptional durability and wash performance

FABRIC

63% Polyester, 35% Cotton, 2% Elastane.
Weight: 260gsm

SIZES (call size/waist ")

XS/30, S/32, M/34, L/36, XL/38,
2XL/40, 3XL/42, 4XL/44
(Regular 31" & Long leg 34")

COLOUR

5 as listed

LADIES' PERFORMANCE 'CHINO' JEAN

PR570

- Classic cut Chino with two front pockets
- Rivet detail
- Two patch pockets to the rear
- Belts loops to facilitate a belt.
- Covered YKK zip fly with single metal button fastening on the waistband
- Stretch fabric capability for maximum comfort
- Exceptional durability and wash performance

FABRIC

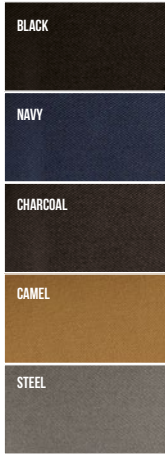
63% Polyester, 35% Cotton, 2% Elastane.
Weight: 260gsm

SIZES

XS/8, S/10, M/12, L/14, XL/16,
2XL/18, 3XL/20, 4XL/22, 5XL/24
(Regular 31" & Long leg 34")

COLOUR

5 as listed



Clip-on TROUSER BRACES

PR701

- Elastic Y back strap braces
- Three non-slip clip buckles for attachment
- Fully adjustable with lock buckles
- Faux leather piece

FABRIC

60% Polyester, 40% Rubber

SIZES

One Size

COLOUR

5 as listed



VINTAGE

INSPIRED • WORKWEAR

EST. 1999

Division

'DIVISION' WAXED LOOK BIB APRON WITH FAUX LEATHER

PR136

- Waxed effect giving a water repellent surface
- Contrast fabric features for function and decoration
- Faux leather ties and neckband with adjustable buckle
- Measuring 86cm long and 72cm wide
- Can be teamed with PR134 and PR135 waxed look aprons for a great colour match
- Tinted Denim effect created by contrast coloured yarns

FABRIC

100% Cotton Denim with Acrylic 'Waxed Look' coating.
Weight: 350gsm.
Wash: 40°C domestic wash.

COLOUR

4 as listed



NEW



NEW



PR134



PR135

VINTAGE

INSPIRED • WORKWEAR

EST. 1999

District

DENIM APRON

'DISTRICT' WAXED LOOK BIB APRON

PR134

- Durable waxed look finish
- Oversized jeans pocket with stitch and rivet detail
- Contrast colour ties secured in place with metal eyelets
- Fabric features including, patch pocket and cloth holder
- Measuring 86cm long and 72cm wide.

FABRIC

100% Cotton Denim with Acrylic 'Waxed Look' Coating.
Weight: 350gsm

COLOUR

2 as listed



'DIVISION' WAXED LOOK WAIST APRON

PR135

- Measuring 70cm wide and 50cm long.

FABRIC

100% Cotton Denim with Acrylic 'Waxed Look' Coating.
Weight: 350gsm

COLOUR

4 as listed



VINTAGE

I • N • S • P • I • R • E • D

WORKWEAR



DOMAIN CONTRAST DENIM APRON

'DOMAIN' CONTRAST DENIM BIB APRON

PR127

- Neckband with metal buckle fastening for height adjustment
- 36cm wide centre pocket with reverse contrast trim, including pen compartment
- Reverse contrast denim top centre pocket
- Metal eyelets secure 100cm contrast fabric ties
- 86cm long and 72cm wide
- Style match with PR128 'Domain' Waist Apron

FABRIC

70% Cotton, 30% Polyester.
Weight: 265gsm

COLOUR

Black Denim, Indigo Denim

'DOMAIN' CONTRAST DENIM WAIST APRON

PR128

- Mid-length waist apron measuring 50cm long by 70cm wide

FABRIC

70% Cotton, 30% Polyester.
Weight: 265gsm

COLOUR

Black Denim, Indigo Denim



NEW



PR128



PR127


PREMIER®

UNIFORMS THAT WORK FOR YOU

PR125

PR126

VINTAGE

INSPIRED · WORKWEAR

EST. 1999

JEAN STITCH DENIM

JEANS STITCH DENIM BIB APRON

PR126

- Four pocket compartments
- Contrast stitch detail
- Adjustable buckle on neck band
- Width 72cm, length 86cm

FABRIC

70% Cotton, 30% Polyester
Weight 265gsm
Wash: 60°C domestic wash, 85°C industrial wash

COLOUR

2 as listed



JEANS STITCH DENIM WAIST APRON

PR125

- Four pocket compartments
- Contrast stitch detail
- Antique Silver and Brass rivets
- Length 39.5cm

FABRIC

70% Cotton, 30% Polyester
Weight 265gsm
Wash: 60°C domestic wash, 85°C industrial wash

COLOUR

2 as listed



Contrast stitch detail

Adjustable buckle

**VINTAGE
INSPIRED
WORKWEAR**
ESTABLISHED 1999

ARTISAN

'ARTISAN' LEATHER
CROSS BACK APRON

PR140

- Cross over back straps and metal buckle fastening around the waist
- Two front patch pockets
- Heavyweight and durable
- Antique brass buckles and clips
- Reinforced stitching
- Length 86cm, width 72cm

FABRIC

100% Real Buffalo Leather
Weight: 330gsm

SIZES

One size

COLOUR

2 as listed



NEW



 [®]
PREMIER

UNIFORMS THAT WORK FOR YOU

PR132

PR133

NEW

VINTAGE I·N·S·P·I·R·E·D WORKWEAR

ESTABLISHED 1999

Chino

'CHINO' BIB APRON

PR132

- Full bib Apron measuring 86cm long by 72cm wide
- 'Chino' style stitched pockets with rivets
- Centre top pocket
- Neck strap with buckle and adjustable snap button fastening

FABRIC

100% Cotton Twill.
Weight: 235gsm

COLOUR

4 as listed



BLACK

STEEL

'CHINO' WAIST APRON

PR133

- Short waist Apron measuring 60cm wide by 33cm long
- 'Chino' waistband and pocket styling
- False fly detail for design
- Metal eyelets secure 90cm self fabric ties

FABRIC

100% Cotton Twill.
Weight: 235gsm

COLOUR

4 as listed



KHAKI

NAVY



Snap button fastening



Rivet detail

COTTON

CANVAS

Calibre

'CALIBRE' HEAVY COTTON CANVAS BIB APRON

PR130

- Full bib Apron measuring 86cm long by 72cm wide
- Heavyweight and durable
- Large metal eyelet detail for neckband knot
- 90cm self fabric ties.

FABRIC

100% Heavy Cotton Canvas.
Weight: 320gsm

COLOUR
8 as listed

NEW

'CALIBRE' HEAVY COTTON CANVAS WAIST APRON

PR131

- Mid-length waist apron measuring 50cm long by 70cm wide
- Heavyweight and durable
- Metal eyelets secure 90cm self fabric waist ties

FABRIC

100% Heavy Cotton Canvas.
Weight: 320gsm

COLOUR
8 as listed

NEW





PR130

PR131

8
"COLOURS"

'COLOURS COLLECTION' BIB APRON

PR150

- Bib apron offering good coverage
- Adjustable buckle on neckband
- Self-fabric ties
- Length of 86cm and width of 72cm

FABRIC

65% Polyester, 35% Cotton.

Weight: 195gsm

Denim designs are 70% Cotton, 30% Polyester

Denim designs are 265gsm

Wash: 60°C domestic wash, 85°C industrial wash.

TIP

Great shades come to those who wait! Over time, repeated washing will give denim aprons a vintage appearance.

60 Shades OF SERVICE




PREMIER®

UNIFORMS THAT WORK FOR YOU




85°




**FARMER'S
MARKET**

PR154

PR151

85°

COLOURS COLLECTION

'COLOURS COLLECTION' HALF WAIST APRON

PR151

- Mid length waist apron
- 90cm self-fabric ties
- Width 70cm, length 50cm
- Available in 40 colours

FABRIC

65% Polyester, 35% Cotton
Weight 195gsm
Wash: 60°C domestic wash,
85°C industrial wash

COLOUR

40 as listed

'COLOURS COLLECTION' BIB APRON WITH POCKET

PR154

- Sliding adjustable buckle on neck band
- 90cm self-fabric ties
- Width 72cm, length 86cm
- Tablet friendly centre pocket with combined pen slot

FABRIC

65% Polyester, 35% Cotton
Weight 195gsm
Wash: 60°C domestic wash,
85°C industrial wash

COLOUR

40 as listed





PR158

PR155

85°

COLOURS COLLECTION

'COLOURS COLLECTION' THREE POCKET WAIST APRON

PR155

- 90cm self-fabric ties
- Width 60cm, length 33cm
- Three open pockets
- Available in 28 colours

FABRIC

65% Polyester, 35% Cotton
Weight 195gsm
Wash: 60°C domestic wash,
85°C industrial wash

COLOUR

28 as listed

'COLOURS COLLECTION' LONG BAR APRON

PR158

- 90cm self-fabric ties
- Width 80cm, length 90cm
- Tablet friendly centre pocket with combined pen slot
- Popular continental style

FABRIC

65% Polyester, 35% Cotton
Weight 195gsm
Wash: 60°C domestic wash,
85°C industrial wash

COLOUR

28 as listed





'COLOURS COLLECTION' 2 IN 1 APRON

PR159

- One apron worn two ways
- Bib and waist apron styles
- Pocket features on both styles
- Self-fabric ties

FABRIC

65% Polyester, 35% Cotton
Weight 195gsm
Wash: 60°C domestic wash,
85°C industrial wash

COLOUR

10 as listed



85°



Can be worn as a bib apron, doubles over and neck ties are secured away to form a waist apron.

CHILD'S PLAY

'COLOURS COLLECTION' CHILDREN'S BIB APRON

PR149

- Safety release mechanism on neck band
- 50cm self-fabric ties
- Two sizes available
- Infant width 43cm, length 53cm
- Junior width 48cm, length 63cm

FABRIC

65% Polyester, 35% Cotton
Weight 195gsm
Wash: 60°C domestic wash,
85°C industrial wash

COLOUR

16 as listed



16
"COLOURS"

POLYESTER BIB APRON

PR167

- Adjustable sliding buckle on neck band
- Width 72cm, length 86cm
- 90cm self-fabric ties
- White colourway perfect for sublimation

FABRIC

100% Polyester
Weight 195gsm
Wash: 40°C domestic wash

COLOUR

4 as listed



'COLOURS COLLECTION' CONTRAST BIB APRON

PR162

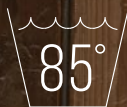
- Colour contrasting vertical panel
- Sliding adjustable buckle on neck band
- Width 72cm, length 86cm
- Two front slanted pockets

FABRIC

65% Polyester, 35% Cotton
Weight 195gsm
Wash: 60°C domestic wash,
85°C industrial wash

COLOUR

9 as listed



ESSENTIAL SERVICE

ESSENTIAL BIB APRON

PR165

- Classic bib apron
- Width 67cm, length 78cm
- 75cm self-fabric ties
- Budget solution

FABRIC

80% Polyester, 20% Cotton
Weight 170gsm
Wash: 40°C domestic wash.

COLOUR



BLACK



BISTRO WAIST APRON WITH POCKET

PR156

- 90cm self-fabric ties
- Width 90cm, length 80cm
- Waistband features a hanging pocket with pen slot
- Popular continental style

FABRIC

65% Polyester, 35% Cotton
Weight 195gsm
Wash: 60°C domestic wash,
85°C industrial wash

COLOUR



BLACK



PR156

'COLOURS COLLECTION' BISTRO WAIST APRON

PR169

- Popular continental style
- Width 100cm, length 100cm
- 90cm self-fabric ties
- Available in 10 colours

FABRIC

65% Polyester, 35% Cotton
Weight 195gsm
Wash: 60°C domestic wash,
85°C industrial wash

COLOUR

10 as listed



PR169



BLACK



NAVY



ROYAL



DARK GREY



WHITE



RED



BURGUNDY



BROWN



KHAKI



LIME

COFFEE.

DS.



FLAT WHITE

FRESHLY GROUND COFFEE STEAMED MILK

CAFFÈ LATTE

ESPRESSO STEAMED MILK MILK FOAM

CAPPUCCINO

FRESH COFFEE STEAMED MILK FROTH

AMERICANO

ESPRESSO HOT WATER BLACK COFFEE

ESPRESSO

CONCENTRATED HIGHLY CAPFINATED

CORTADO

ESPRESSO WITH HOT WATER

MACCHIATO

TRADITIONAL

ESPRESSO

MILK

ESPRESSO

ESPRESSO WITH SUGAR

ESPRESSO

STRONG

IN COLOMBIA

ANTIGUA

NSOON

PEABERRY

A BLUE MOUNTAIN



PR114

PR112



Fairtrade

COTTON APRONS

Premier offers a solution for businesses who promote a message of Fairtrade through their working practices. These aprons are labelled with the official Fairtrade logo which acts as a great endorsement for your brand.

FAIRTRADE BIB APRON

PR112

- Sliding adjustable buckle on neckband
- 90cm self-fabric ties
- Centre pocket
- Width 60cm, length 84cm

FABRIC

100% Certified Fairtrade Cotton
Weight 200gsm
Wash: 40°C domestic wash.

COLOUR



BLACK

FAIRTRADE WAIST APRON

PR114

- Half waist apron
- 90cm self-fabric ties
- Width 70cm
- Length 50cm

FABRIC

100% Certified Fairtrade Cotton
Weight 200gsm
Wash: 40°C domestic wash.

COLOUR



BLACK

TWENTY



COLOURS

COTTON

CREDENTIALS

100% COTTON BIB APRON

PR102

- Self-fabric ties
- Self-fabric neckband
- Width 60cm, length 87cm
- Available in 20 colours

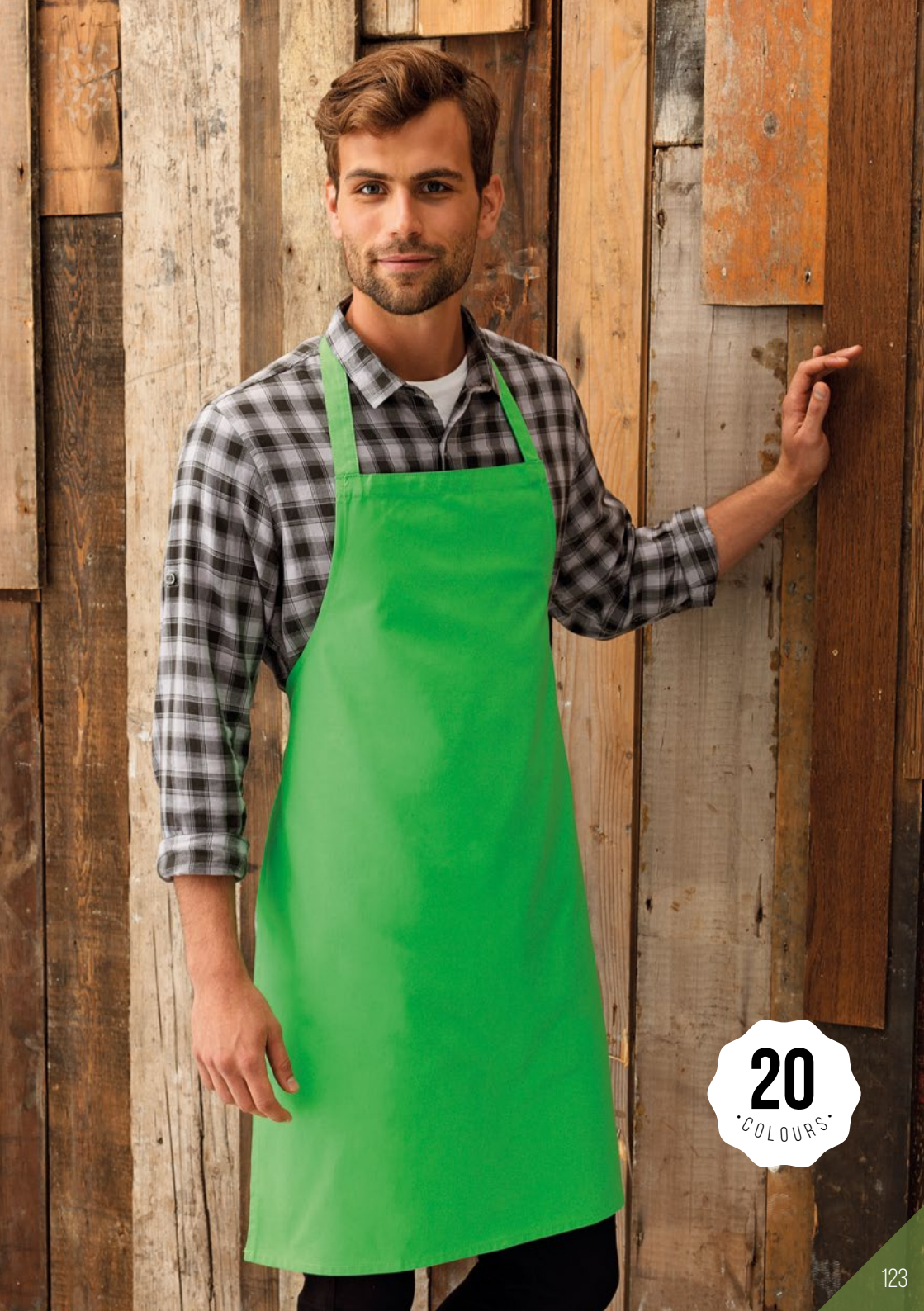
FABRIC

100% Cotton
Weight 240gsm
Wash: 60°C domestic wash,
85°C industrial wash

COLOUR

20 as listed





20
"COLOURS"



PR101

BIB APRON

PR101

- Black anti-tangle ties
- Black neckband
- Width 72cm, length 87cm
- Crease resistant finish

FABRIC

65% Polyester, 35% Cotton.
Klopman Superbandmaster
Weight 210gsm
Wash: 60°C domestic wash,
85°C industrial wash

COLOUR



BLACK

BIB APRON WITH POCKET

PR104

- Black anti-tangle ties
- Black neckband
- Width 60cm, length 87cm
- Double front pocket

FABRIC

65% Polyester, 35% Cotton.
Klopman Superbandmaster
Weight 210gsm
Wash: 60°C domestic wash,
85°C industrial wash

COLOUR



BLACK



PR104



6 KLOPMAN STYLES

Klopman fabric is renowned for exceptional colour consistency and colour retention. You can be assured that these styles work as hard as you day after day.



DELUXE BIB APRON

PR124

- Sliding adjustable buckle on neck band
- Double front pocket
- Width 60cm
- Length 84cm

FABRIC

65% Polyester, 35% Cotton.
Klopman Superbandmaster
Weight 210gsm
Wash: 60°C domestic wash,
85°C industrial wash

COLOUR



Fabric by
KLOPMAN



PR105

CLASSIC
SERVICE
OPTIONS

ZIP POCKET WAIST APRON

PR105

- Two zipped closed pockets
- Centre open pocket
- 90cm self-fabric ties
- Width 60cm, length 33cm

FABRIC

65% Polyester, 35% Cotton.

Klopman Indestructible

Weight 245gsm

Wash: 60°C domestic wash,

85°C industrial wash

COLOUR



BLACK



PR109

PR107

3 OPEN POCKET BAR APRON

PR109

- Three open pockets
- 90cm self-fabric ties
- Width 60cm
- Length 33cm

FABRIC

65% Polyester, 35% Cotton.
Klopman Indestructible
Weight 245gsm
Wash: 60°C domestic wash,
85°C industrial wash

COLOUR



SHORT BAR APRON

PR107

- Half waist apron
- 90cm self-fabric ties
- Width 90cm
- Length 40cm

FABRIC

65% Polyester, 35% Cotton.
Klopman Indestructible
Weight 245gsm
Wash: 60°C domestic wash,
85°C industrial wash

COLOUR



18
"COLOURS"



LADIES' LONG LENGTH POCKET TABARD

PR172

- Pull-on coverall with a length of 78cm
- Side tabs with adjustable press stud fastening
- Self-coloured bias trim
- Centre pocket

FABRIC

65% Polyester, 35% Cotton
Weight: 195gsm
Wash: 60°C domestic wash,
85°C industrial wash

SIZES

10/S, 12/M, 14/L, 16/XL

COLOUR

3 colours as listed



LADIES' POCKET TABARD

PR171

- Pull-on coverall with a length of 68cm
- Side tabs with adjustable press stud fastening
- Self-coloured bias trim
- Centre pocket

FABRIC

65% Polyester, 35% Cotton
Weight: 195gsm
Wash: 60°C domestic wash, 85°C industrial wash

SIZES

10/S, 12/M, 14/L, 16/XL, 18/2XL, 20/3XL

COLOUR

18 colours listed left



TABARDS

LAYERS OF STYLE

LADIES' CONTRAST TABARD

PR176

- Over-the-head style
- Side tabs with two stud button fastenings
- Two front slanted pockets
- Length 72cm

FABRIC

65% Polyester, 35% Cotton
Weight: 195gsm
Wash: 60°C domestic wash,
85°C industrial wash

SIZES

10/S, 12/M, 14/L, 16/XL

COLOUR

2 as listed



TULIP WRAP AROUND TUNIC

PR177

- Over-the-head style
- Attractive shape to flatter the female figure
- V-neck styling
- Centre patch pocket

FABRIC

Fabric: 100% polyester plain weave
Weight: 185gsm
Wash: 40°C domestic wash.

SIZES

S/M 10/12, **L/XL** 14/16

COLOUR

4 as listed below



FASTENING TIP

Bring the ties from back to front and tie round your waist on the underside, then take front ties and fasten at the back.



CHEFSWEAR

PREPARATION IS EVERYTHING

Style and practicality is the order of the day in the Premier kitchen! Chef's whites combine with chef's blacks, denims, checks and stripes to create an interesting menu of choice.

Just as every good dish should be seasoned, every good chef should be accessorised, so we offer a selection of hats, scarfs and aprons to complete the look.






PREMIER[®]
UNIFORMS THAT WORK FOR YOU

NEW



DENIM CHEF'S JACKET

DENIM CHEF'S JACKET

PR660

- Cotton rich chef's jacket
- Cross-over front fastening
- Ten snap button fasteners
- Mandarin collar stand

FABRIC

60% Cotton 40% Polyester.
Weight: 230gsm

SIZES

XS, S, M, L, XL, 2XL, 3XL



COLOUR

Black Denim, Grey Denim



 [®]
PREMIER

UNIFORMS THAT WORK FOR YOU

PR665



The Main

INGREDIENTS

PR664

SHORT SLEEVE STUDED FRONT CHEF'S JACKET

PR664

- Mandarin collar
- Press stud fastening
- Wrap over style
- Unisex styling

FABRIC

65% Polyester, 35% Cotton
Weight: 195gsm
Wash: 60°C domestic wash,
85°C industrial wash

SIZES

XS, S, M, L, XL, 2XL, 3XL

COLOUR

2 as listed

LONG SLEEVE STUDED FRONT CHEF'S JACKET

PR665

- Mandarin collar
- Press stud fastening
- Wrap over style
- Unisex styling

FABRIC

65% Polyester, 35% Cotton
Weight: 195gsm
Wash: 60°C domestic wash,
85°C industrial wash

SIZES

XS, S, M, L, XL, 2XL, 3XL

COLOUR

2 as listed



LADIES' CHEFSWEAR

IN 2 CLASSIC STYLES

LADIES' SHORT SLEEVE CHEF'S JACKET

PR670

- Ten button hole wrap over fastening
- Pen pocket on left sleeve
- Mandarin collar
- Panelled back for a more fitted style

FABRIC

65% Polyester, 35% Cotton.
Weight: 195gsm

SIZES

8/XS, 10/S, 12/M, 14/L, 16/XL, 18/2XL

COLOUR

1 as listed

LADIES' LONG SLEEVE CHEF'S JACKET

PR671

- Ten button hole wrap over fastening
- Pen pocket on left sleeve
- Mandarin collar
- Panelled back for a more fitted style

FABRIC

65% Polyester, 35% Cotton.
Weight: 195gsm

SIZES

8/XS, 10/S, 12/M, 14/L, 16/XL, 18/2XL

COLOUR

1 as listed



PR670

PR671



PR656



Culinary CLASSICS

THE LONG & SHORT OF IT

SHORT SLEEVE CHEF'S JACKET

PR656

- Ten button hole wrap over fastening
- Pen pocket on left sleeve
- Mandarin collar
- long life resin buttons

FABRIC

65% Polyester, 35% Cotton.
Weight: 195gsm

SIZES

XS, S, M, L, XL, 2XL, 3XL, 4XL

COLOUR

2 as listed

LONG SLEEVE CHEF'S JACKET

PR657

- Ten button hole wrap over fastening
- Pen pocket on left sleeve
- Mandarin collar
- long life resin buttons

FABRIC

65% Polyester, 35% Cotton.
Weight: 195gsm

SIZES

XS, S, M, L, XL, 2XL, 3XL, 4XL

COLOUR

2 as listed



PR669



CATCH OF THE DAY

CHEF'S SHORT SLEEVE 'CULINARY' PULL ON TUNIC

PR668

- Over-the-head style
- Mandarin collar
- Wrap over style
- Single press stud fastening

FABRIC

65% Polyester, 35% Cotton
Weight: 195gsm
Wash: 60°C domestic wash,
85°C industrial wash

SIZES

XS, S, M, L, XL, 2XL

COLOUR

1 as listed



CHEF'S LONG SLEEVE 'CULINARY' PULL ON TUNIC

PR669

- Over-the-head style
- Mandarin collar
- Wrap over style
- Single press stud fastening

FABRIC

65% Polyester, 35% Cotton
Weight: 195gsm
Wash: 60°C domestic wash,
85°C industrial wash

SIZES

XS, S, M, L, XL, 2XL

COLOUR

1 as listed



COOLMAX®
Active Performance

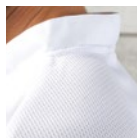
PR659

SERVED CHILLED

LONG SLEEVE COOLMAX CHEF'S JACKET

PR659

- Coolmax back panel for moisture management
- Mandarin collar
- Concealed press stud fastening



FABRIC

65% Polyester, 35% Cotton
Weight: 195gsm
Wash: 50°C domestic wash

SIZES

XS, S, M, L, XL, 2XL

COLOUR

1 as listed



WHITE

LONG SLEEVE CUISINE CHEF'S JACKET

PR661

- Mandarin collar
- Comes with Black removable studs (other colours available, see page 145)
- Ten hole wrap over fastening
- Turn back split cuff

FABRIC

65% Polyester, 35% Cotton
Weight: 195gsm

SIZES

XS, S, M, L, XL, 2XL, 3XL, 4XL

COLOUR

2 as listed

50°

CHEF'S JACKET STUDS

PR652

- Removable studs
- For use with PR661 Cuisine Jacket
- Sold in bags of 12

FABRIC

Durable plastic
Wash: Wipe clean

COLOUR

4 as listed



BLACK



NAVY



WHITE



RED

PREMIER[®]

UNIFORMS THAT WORK FOR YOU

PR661



PR661





NAVY & WHITE CHECK BLACK & WHITE CHECK

BLACK & WHITE CHECK *BLACK

BLACK

SLIM FIT

A Walk in the KITCHEN

PULL ON CHEF'S TROUSER

PR552

- Elasticated waist
- Rear patch pocket
- Zip fly
- 77cm/30.5" inside leg

FABRIC

65% Polyester, 35% Cotton.
Weight: 195gsm
Wash: 60°C domestic wash,
85°C industrial wash

SIZES

XS, S, M, L, XL, 2XL

COLOUR

2 colours as listed

ESSENTIAL CHEF'S TROUSER

PR553

- Elasticated waist
- Draw cord
- Swing pockets
- 77cm/30.5" inside leg

FABRIC

65% Polyester, 35% Cotton.
Weight: 195gsm
Wash: 60°C domestic wash,
85°C industrial wash

SIZES

**XS, S, M, L, XL, 2XL,
3XL, *4XL**

(*only available in Black)

COLOUR

2 colours as listed

CHEF'S SELECT SLIM LEG TROUSER

PR554

- Fitted style on lower leg
- Rear patch pocket
- Patch pocket on right leg
- Elasticated waist with draw cord and zip fly fastening

FABRIC

65% Polyester, 35% Cotton.
Weight: 195gsm
Wash: 60°C domestic wash,
85°C industrial wash

SIZES

XS, S, M, L, XL, 2XL

COLOUR

1 colour as listed



COOL[®]

CHECKER



CHEF'S COOLCHECKER T-SHIRT

PR649

- Crew neck styling
- Mesh back panel for airflow
- Underarm side vent holes
- Pen pocket on left sleeve

FABRIC

100% Polyester
Weight: 135gsm
Wash: 40°C domestic wash

SIZES

XS, S, M, L, XL, 2XL, 3XL

COLOUR

2 as listed



HATS OFF

CHEF'S SKULL CAP

PR653

- Flat top
- Elasticated back
- One size fits all

FABRIC

Colours - 65% Polyester, 35% Cotton
 *Striped - 100% Cotton
 Weight: Colours - 195gsm
 *Striped - 240gsm
 Wash: 60°C domestic wash,
 85°C industrial wash

SIZES

One size

COLOUR

10 as listed



CHEF'S ZANDANA

PR658

- Two ties at the back
- Elasticated back
- Neck flap
- Unisex design

FABRIC

65% Polyester, 35% Cotton.
Weight: 195gsm

SIZES

One size

COLOUR

2 as listed



CHEF'S SCARF

PR654

- Triangular scarf
- Can be worn as a bandana, neckerchief or headband
- Colours to complement aprons, stud and skull caps
- Crease resistant finish

FABRIC

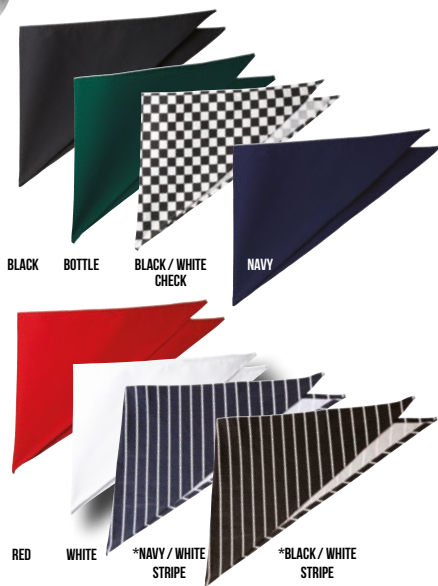
Colours - 65% Polyester, 35% Cotton
*Striped - 100% Cotton
Weight: Colours - 195gsm
*Striped - 240gsm
Wash: 60°C domestic wash,
85°C industrial wash

SIZES

One size

COLOUR

8 as listed



TURN UP CHEF'S HAT

PR648

- Turn up double edge band
- Five eyelets for ventilation
- Four sizes available

FABRIC

65% Polyester, 35% Cotton.
Weight: 195gsm
Wash: 60°C domestic wash,
85°C industrial wash

SIZES

S, M, L, XL

COLOUR

2 as listed.



85°





60

Shades

OF SERVICE



'COLOURS COLLECTION' BIB APRON

PR150

- Bib apron offering good coverage
- Adjustable buckle on neckband
- Self-fabric ties
- Length of 86cm and width of 72cm

FABRIC

65% Polyester, 35% Cotton.
 Weight: 195gsm
 Denim designs are 70% Cotton,
 30% Polyester
 Denim designs are 265gsm
 Wash: 60°C domestic wash,
 85°C industrial wash.

TIP

Great shades come to those who wait!
 Over time, repeated washing will give
 denim aprons a vintage appearance.



PURE COTTON

100% COTTON BIB APRON

PR102

- Self-fabric ties
- Self-fabric neckband
- Width 60cm, length 87cm
- Available in 20 colours

FABRIC

100% Cotton
Weight 240gsm
Wash: 60°C domestic wash,
85°C industrial wash

COLOUR

20 as listed



STRIPED BIB APRON

PR110

- Butcher's style apron
- 90cm self-fabric ties and neck band
- Width 72cm, length 101cm

FABRIC

Navy/White, Black/White: 100% Cotton
Weight 240gsm

Black/Grey:
65% Polyester, 35% Cotton
Weight 205gsm

Wash: 60°C domestic wash,
85°C industrial wash

COLOUR

3 as listed



BLACK/
WHITE

BLACK/
GREY

NAVY/
WHITE



Premier

BEAUTY

Give your team its very own makeover with a choice of stunning beauty tunics. With various fastening options and design features, our tunics are designed with the female form in mind with back and bust darts for comfort and style.

We've added some extra colourways to our PR683 Blossom Tunic on page, 156 and continue to offer a colourful collection of over-the-head tabards which are ideal for house-keeping and nursery staff.





BLOSSOM

ASYMMETRIC BUTTON TUNIC

PR683

- Flattering feminine fit with bust and back darts
- Mandarin collar
- Concealed zip through fastening and press stud
- Side vents

FABRIC

100% Polyester plain weave
Weight: 185gsm
Wash: 40°C domestic wash

SIZES

6/2XS, 8/XS, 10/S, 12/M, 14/L, 16/XL, 18/2XL,
20/3XL, 22/4XL, 24/5XL

COLOUR

7 as listed



DARK GREY
STRAWBERRY RED
NAVY



LOOKING GOOD

IS YOUR BUSINESS



LILY

CONTRAST TUNIC

PR687

- Flattering feminine fit with bust and back darts
- Contrast coloured piping detail
- Eight 'bar' button fastening
- Side vents

FABRIC

100% Polyester plain weave
Weight: 185gsm
Wash: 40°C domestic wash

SIZES

6/2XS, 8/XS, 10/S, 12/M, 14/L, 16/XL, 18/2XL,
20/3XL, 22/4XL, 24/5XL

COLOUR

6 colours as listed



TURQUOISE &
BLACK

BLACK &
TURQUOISE

BLACK &
WHITE



HOT PINK &
BLACK

BLACK &
HOT PINK

BLACK &
PURPLE

CAMELLIA

ZIP TUNIC

PR686

- Flattering feminine fit with bust and back darts
- Cross over neckline
- Pull-on style with front feature zip
- Side vents

FABRIC

100% Polyester plain weave
Weight: 185gsm
Wash: 40°C domestic wash

SIZES

6/2XS, 8/XS, 10/S, 12/M, 14/L, 16/XL, 18/2XL,
20/3XL, 22/4XL, 24/5XL

COLOUR

3 colours as listed



BLACK &
TURQUOISE

BLACK &
BLACK

BLACK &
HOT PINK



PR686



PR687





ORCHID

WRAP OVER TUNIC

PR682

- Flattering feminine fit with bust and back darts
- Mandarin collar
- Eight 'bar' button fastening
- Side vents

FABRIC

100% Polyester plain weave
Weight: 18.5gsm
Wash: 40°C domestic wash

SIZES

6/2XS, 8/XS, 10/S, 12/M, 14/L, 16/XL, 18/2XL,
20/3XL, 22/4XL, 24/5XL

COLOUR

14 colours as listed



Salon SASS!

PEONY

CONTRAST PANELLED TUNIC

PR684

- Flattering feminine fit with bust and back darts
- V-neck with contrast coloured insert
- Pull-on style with back zip fastening
- Side vents

FABRIC

100% Polyester plain weave
Weight: 18.5gsm
Wash: 40°C domestic wash

SIZES

6/2XS, 8/XS, 10/S, 12/M, 14/L, 16/XL, 18/2XL,
20/3XL, 22/4XL, 24/5XL

COLOUR

2 colours as listed



ROSE

WRAP SATIN TRIM TUNIC

PR690

- Flattering feminine fit with bust and back darts
- Satin trim creating the illusion of a wrap tunic
- Pull-on style with back zip fastening
- Side vents

FABRIC

100% Polyester plain weave
Weight: 18.5gsm
Wash: 40°C domestic wash

SIZES

6/2XS, 8/XS, 10/S, 12/M, 14/L, 16/XL, 18/2XL,
20/3XL, 22/4XL, 24/5XL

COLOUR

4 colours as listed





PR684



PR690

IVY

CONTRAST NECK TUNIC

PR691

- Flattering feminine fit with bust and back darts
- Cross-over neckline with contrast coloured trim
- Pull-on style with back zip fastening
- Side vents

FABRIC

100% Polyester plain weave
Weight: 185gsm
Wash: 40°C domestic wash

SIZES

6/2XS, 8/XS, 10/S, 12/M, 14/L, 16/XL,
18/2XL, 20/3XL, 22/4XL, 24/5XL

COLOUR

4 colours as listed

PR691



PREMIER[®]

UNIFORMS THAT WORK FOR YOU



PR681

MIKA

FEATURE BUTTON TUNIC

PR681

- Flattering feminine fit with bust and back darts
- Four sparkly feature buttons embellished on the trim
- Pull-on style with back zip fastening
- Side vents

FABRIC

100% Polyester plain weave
Weight: 185gsm
Wash: 40°C domestic wash

SIZES

6/2XS, 8/XS, 10/S, 12/M, 14/L, 16/XL,
18/2XL, 20/3XL, 22/4XL, 24/5XL

COLOUR

2 colours as listed

IRIS

SALON TROUSERS

PR536

- Deep waistband with two button fastening
- Straight leg cut
- Zip fly fastening

FABRIC

100% Polyester plain weave
Weight: 185gsm
Wash: 40°C domestic wash

SIZES

8/XS, 10/S, 12/M, 14/L, 16/XL, 18/2XL,
20/3XL, 22/4XL, 24/5XL

Regular leg 31"/79 cm
long leg 34"/86 cm

**STRAIGHT
FIT**



EPSOM

MEN'S WRAP TUNIC

PR693

- Brushed silver fastening button
- Concealed zip fastening
- Mandarin Collar
- Side vents

FABRIC

100% Polyester plain weave
Weight: 185gsm
Wash: 40°C domestic wash

SIZES (call size / chest ")

**S/34, M/38, L/42,
XL/46, 2XL/50**



BARBER'S CORNER

CUTTING EDGE LOOKS



- 1** PR150 (see pg 108)
BIB APRON
60 colours
PR222 (see pg 73)
JEANS STITCH DENIM SHIRT
2 colours

- 2** PR130 (see pg 106)
'CALIBRE' HEAVY COTTON
CANVAS BIB APRON
8 colours
PR218 (see pg 82)
LONG-JOHN ROLL SLEEVE TEE
5 colours



3

PR140 (see pg 102)
'ARTISAN' REAL LEATHER
CROSS BACK BIB APRON
2 colours

PR250 (see pg 56)
'MULLIGAN' CHECK MEN'S
COTTON LONG SLEEVE SHIRT
4 colours

4

PR127 (see pg 98)
'DOMAIN' CONTRAST
DENIM BIB APRON
2 colours

PR218 (see pg 82)
LONG-JOHN ROLL SLEEVE TEE
5 colours

5

PR132 (see pg 105)
'CHINO' BIB APRON
4 colours

PR218 (see pg 82)
LONG-JOHN ROLL SLEEVE TEE
5 colours



'COLOURS COLLECTION' BIB APRON

PR150

- Bib apron offering good coverage
- Adjustable buckle on neckband
- Self-fabric ties
- Length of 86cm and width of 72cm

FABRIC

65% Polyester, 35% Cotton.
Denim designs are 70% Cotton, 30% Cotton
Weight: 195gsm.
Denim designs are 265gsm
Wash: 60°C domestic wash, 85°C industrial wash

COLOUR

60 colours as listed

TIP

Great shades come to those who wait! Over time, repeated washing will give denim aprons a vintage appearance.

'COLOURS COLLECTION' 2 IN 1 APRON

PR159

- One apron worn two ways
- Bib and waist apron styles
- Pocket features on both styles
- Self-fabric ties

FABRIC

65% Polyester, 35% Cotton
Weight 195gsm
Wash: 60°C domestic wash, 85°C industrial wash

COLOUR

10 colours as listed



PR159

VERSATILE

SALON

HOTEL

CHILD CARE

FLORIST



PR150



WE'VE GOT YOU COVERED

LADIES' POCKET TABARD

PR171

- Pull-on coverall with a length of 68cm
- Side tabs with adjustable press stud fastening
- Self-coloured bias trim
- Centre pocket

FABRIC

65% Polyester, 35% Cotton
Weight: 195gsm
Wash: 60°C domestic wash, 85°C industrial wash

SIZES

10/S, 12/M, 14/L, 16/XL, 18/2XL, 20/3XL

COLOUR

18 colours as listed



LADIES' LONG LENGTH POCKET TABARD

PR172

- Pull-on coverall with a length of 78cm
- Side tabs with adjustable press stud fastening
- Self-coloured bias trim
- Centre pocket

FABRIC

65% Polyester, 35% Cotton
Weight: 195gsm
Wash: 60°C domestic wash, 85°C industrial wash

SIZES

10/S, 12/M, 14/L, 16/XL

COLOUR

3 colours as listed



PR171



PR172



LAYERS OF STYLE

LADIES' SPA TABARD

PR176

- Pull-on coverall with a length of 72cm
- Side tabs with adjustable press stud fastening
- Cross over neckline with contrast trim
- Two front slanted pockets with contrast trim

FABRIC

65% Polyester, 35% Cotton
Weight: 195gsm
Wash: 60°C domestic wash,
85°C industrial wash

SIZES

10/S, 12/M, 14/L, 16/XL

COLOUR

2 colours as listed



PR176



PREMIER[®]

UNIFORMS THAT WORK FOR YOU

TULIP

WRAP AROUND TUNIC

PR177

PR177

- Over-the-head style
- Attractive shape to flatter the female figure
- V-neck styling
- Centre patch pocket

FABRIC

Fabric: 100% polyester plain weave
Weight: 185gsm
Wash: 40°C domestic wash.

SIZES

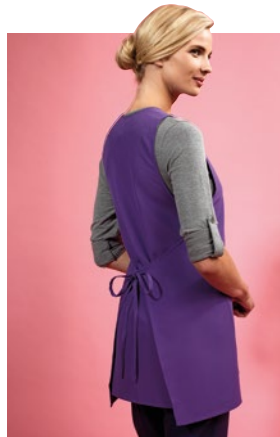
10/S, 12/M, 14/L, 16/XL

COLOUR

4 colours as listed

TIP.

Bring the ties from back to front and tie round your waist on the underside, then take front ties and fasten at the back.



MEN'S MALVERN HEALTHCARE TUNIC

PR609

- Concealed zip fastening with press stud
- Soft collar styling
- Two front pockets
- Contrast trim on collar, sleeves and pockets

FABRIC

65% Polyester, 35% Cotton

Weight: 195gsm

Wash: 60°C domestic wash, 85°C industrial wash

SIZES (call size/chest ")

S/34, **M**/38, **L**/42, **XL**/46, **2XL**/50, **3XL**/54

PR609



NAVY/WHITE

VITALITY HEALTHCARE TUNIC

PR604

- Soft collar styling
- Concealed zip fastening and press stud
- Two slanted front pockets
- Contrast trim on neckline, sleeves and pockets

FABRIC

65% Polyester, 35% Cotton
Weight: 195gsm
Wash: 60°C domestic wash, 85°C industrial wash

SIZES

8/XS, 10/S, 12/M, 14/L, 16/XL, 18/2XL,
20/3XL, 22/4XL, 24/5XL

COLOUR

6 as listed

PR604

POPPY HEALTHCARE TROUSER

PR514

- Cross over waistband with two button fastening
- Front fastening zip
- Belt loops
- Two slanted front pockets

FABRIC

65% Polyester, 35% Cotton
Weight: 195gsm
Wash: 60°C domestic wash, 85°C industrial wash

SIZES

8/XS, 10/S, 12/M, 14/L, 16/XL, 18/2XL,
20/3XL, 22/4XL, 24/5XL

COLOUR

5 as listed

PR514



DAISY HEALTHCARE TUNIC

PR605

- V-neck styling
- Concealed zip fastening with press stud.
- Two curved front pockets
- Contrast trim on neckline, sleeves and pockets

FABRIC

65% Polyester, 35% Cotton
Weight: 195gsm
Wash: 60°C domestic wash,
85°C industrial wash

SIZES

8/XS, 10/S, 12/M, 14/L, 16/XL,
18/2XL, 20/3XL, 22/4XL, 24/5XL

COLOUR

4 as listed

PR605



Ethical POLICY

CERTIFICATIONS OF COMPLIANCE

At Premier we take our Corporate Social Responsibility very seriously and we continue to invest to ensure that the long term vision for the company is sustainable in relation to the environment and the people that live and work alongside us.

We are able to provide you with copies of our certifications of compliance, so you can be assured that we are working to the highest ethical, social and environmental standards we can.



Registration, Evaluation, Authorisation and Restriction of Chemicals (REACH)

The REACH directive is a European Union regulation concerning the protection of human health and the environment from the use of chemicals during the production process. All Premier products are produced in factories that are REACH compliant.

Visit www.hse.gov.uk/reach to learn more about the REACH directive.



OEKO-TEX® Standard 100

OEKO-TEX® Standard 100 is an independent testing and certification system for textiles which highlights the use of any dangerous substances that could be harmful

to human health.

At every stage of production, the majority of the Premier fabrics have passed the recognised criteria, proving that no such chemicals have been used during any stage of production. All products that are manufactured from OEKO-TEX® Standard 100 approved fabric have the logo visible on the product page on the Premier website.

Visit www.oeko-tex.com to learn more about OEKO-TEX® Standard 100 testing.



Worldwide Responsible Accredited Production (WRAP)

WRAP is an independent body which gives certification to factories that meet criteria in relation to facilities, production and working practices for employees.

All of the Premier garments that are produced outside of the United Kingdom have been made in WRAP certified factories. The garments that are produced in the UK are made in factories that adhere to 'European Agency Health and Safety at Work' regulations. All garments that are produced in WRAP certified factories have the logo visible on the product page on the Premier website.

Visit www.wrapcompliance.org to learn more about WRAP accreditation.

Read more about our ethical policy at www.premierworkwear.com

SIZE GUIDE

LADIES'

SHIRTS/POLO'S/TEES/CHEF'S JACKETS/KNITWEAR/WAISTCOATS/BEAUTY TUNICS

Call size	XXS	XS	S	M	L	XL	2XL	3XL	4XL	5XL	6XL	7XL	8XL
Size	6	8	10	12	14	16	18	20	22	24	26	28	30
Collar cm	39	40	41	42	44	45	47	48	50	51	53	54.5	56
Bust to fit "	31	33	35	37	39	41	43	45	47	49	51	53	55
Bust to fit cm	79	84	89	94	99	104	109	114	119	124	129	134	139

LADIES' TROUSERS

Call size	XXS	XS	S	M	L	XL	2XL	3XL	4XL	5XL
Size	6	8	10	12	14	16	18	20	22	24
Waist to fit "	22	24	26	28	30	32	34	36	38	40
Waist to fit cm	54	59	64	69	74	79	84	89	94	99

MEN'S

SHIRTS/POLO'S/TEES/CHEF'S JACKETS/KNITWEAR/WAISTCOATS/HEALTH TUNICS

Call size	XS	S	S/M	M	M/L	L	L/XL	XL	2XL	3XL	4XL	5XL	6XL	7XL	8XL
Collar "	14	14½	15	15½	16	16½	17	17½	18	18½	19	20	21	22	23
Collar cm	36	37	38	39.5	41	42	43	44.5	46	47	48	51	53	56	59
Chest to fit "	30	34	36	38	40	42	44	46	50	52	54	56	58	60	62
Chest to fit cm	77	87	92	96	102	107	111	117	126	132	138	142	147	152	157

MEN'S TROUSERS

Call size	S	M	L	XL	2XL	3XL	4XL	5XL
To fit waist"	30	32	34	36	38	40	42	44
To fit waist cm	76	80	86	92	96	100	106	110

CHEF'S TROUSERS

Call size	XS	S	M	L	XL	2XL	3XL	4XL
To fit waist"	24-26	27-29	30-32	33-35	36-38	39-40	41-42	43-44
To fit waist cm	61-66	68-73	76-81	84-89	91-96	99-101	104-106	109-111



WASHCARE

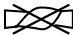








SYMBOLS

Explained






Our clothes are labelled with a whole host of wash care instructions and symbols, but do you really know what they all mean?

FOLLOW PREMIER'S SIMPLE GUIDE TO ACHIEVING THE PERFECT PILE OF LAUNDRY!






DRYING

-  Do not wring
-  Hang to dry
-  Dry flat
-  Drip dry
-  Do not tumble dry
-  Suitable for tumble drying
-  Tumble dry on low heat
-  Tumble dry on medium heat
-  Tumble dry on high heat

WASHING

-  The wash bowl with a number in denotes the maximum temperature that you should wash the garment to, in either a domestic or industrial washing machine.
-  Hand wash only
-  Do not bleach
-  Suitable for dry cleaning
-  Do not dry clean

IRONING

-  Do not iron
-  Iron on low heat
-  Iron on medium heat
-  Iron on high heat
-  Do not steam iron

BUSINESSWEAR

SHIRTS & BLOUSES

PR200	MEN'S POPLIN LONG SLEEVE SHIRT	11
PR202	MEN'S POPLIN SHORT SLEEVE SHIRT	8
PR204	MEN'S FITTED POPLIN SHIRT	12
PR207	MEN'S SUPREME POPLIN LONG SLEEVE SHIRT	12
PR209	MEN'S SUPREME POPLIN SHORT SLEEVE SHIRT	16
PR220	MEN'S MICROCHECK GINGHAM LONG SLEEVE SHIRT	20
PR221	MEN'S MICROCHECK GINGHAM SHORT SLEEVE SHIRT	19
PR234	MEN'S SIGNATURE OXFORD LONG SLEEVE SHIRT	25
PR236	MEN'S SIGNATURE OXFORD SHORT SLEEVE SHIRT	22
PR300	LADIES' POPLIN LONG SLEEVE BLOUSE	11
PR302	LADIES' POPLIN SHORT SLEEVE BLOUSE	8
PR305	LADIES' POPLIN THREE QUARTER SLEEVE BLOUSE	12
PR307	LADIES' SUPREME POPLIN LONG SLEEVE BLOUSE	16
PR309	LADIES' SUPREME POPLIN SHORT SLEEVE BLOUSE	15
PR320	LADIES' MICROCHECK GINGHAM LONG SLEEVE SHIRT	20
PR321	LADIES' MICROCHECK GINGHAM SHORT SLEEVE SHIRT	19
PR334	LADIES' SIGNATURE OXFORD LONG SLEEVE BLOUSE	25
PR336	LADIES' SIGNATURE OXFORD SHORT SLEEVE BLOUSE	22

KNITWEAR

PR694	MEN'S V NECK SWEATER	26
PR695	MEN'S QUARTER ZIP KNITTED SWEATER	30
PR696	LADIES' V NECK SWEATER	30
PR697	LADIES' V NECK CARDIGAN	26
PR698	LADIES' LONG LENGTH KNITTED CARDIGAN	29
PR699	MEN'S SLEEVELESS SWEATER	29

TROUSERS

PR520	MEN'S BUSINESS TROUSERS	32
PR526	MEN'S TAILORED TROUSERS	32
PR528	MEN'S SLIM FIT TROUSERS	33
PR530	LADIES' BUSINESS TROUSERS	33
PR536	LADIES' IRIS STRAIGHT LEG TROUSERS	32
PR538	LADIES' TAPERED LEG TROUSER	33
PR560	MEN'S PERFORMANCE CHINO JEAN	35
PR570	LADIES' PERFORMANCE CHINO JEAN	35

SECURITY

PR210	MEN'S PILOT LONG SLEEVE SHIRT	36
PR212	MEN'S PILOT SHORT SLEEVE SHIRT	36
PR310	LADIES' PILOT LONG SLEEVE SHIRT	38
PR312	LADIES' PILOT SHORT SLEEVE SHIRT	38
PR523	MEN'S SECURITY TROUSERS	39
PR700	PLAIN WORK TIE	39
PR710	CLIP ON WORK TIE	39
PR711	CLIP ON CRAVAT	39
PR715	EPAULETTES	39

TIES

PR705	SATIN BOW TIE	52
PR722	HORIZONTAL STRIPE TIE	52
PR750	'COLOURS' SATIN TIE	41
PR755	'COLOURS' SATIN CLIP ON TIE	41
PR760	MULTI-STRIFE TIE	52
PR762	FOUR STRIPE TIE	53
PR765	'COLOURS' FASHION TIE	44
PR766	CANDY STRIPE TIE	52
PR780	MICRO WAFFLE TIE	47
PR781	MICRO DOT TIE	48
PR782	DOUBLE STRIPE TIE	47
PR783	WAFFLE STRIPE TIE	51
PR784	SPORTS STRIPE TIE	51
PR785	'COLOURS' FASHION CLIP ON TIE	44
PR786	CLUB STRIPE TIE	48
PR787	PUPPY TOOTH TIE	47
PR788	SQUARES TIE	48
PR789	SLIM KNITTED TIE	50
PR793	SLIM TIE	51
PR795	'COLOURS' SILK TIE	52

SCARVES

PR730	'COLOURS' PLAIN BUSINESS SCARF	44
PR740	'COLOURS' PLAIN CHIFFON SCARF	42
PR770	MULTI STRIPE SCARF	52
PR772	FOUR STRIPE SCARF	53

HOSPITALITYWEAR

APRONS

PR101	BIB APRON	124
PR102	COTTON BIB APRON	122
PR104	BIB APRON WITH POCKET	124
PR105	ZIP POCKET WAIST APRON	126
PR107	SHORT BAR APRON	127
PR109	THREE OPEN POCKET BAR APRON	127
PR112	FAIRTRADE BIB APRON	121
PR114	FAIRTRADE WAIST APRON	121
PR124	DELUXE BIB APRON	125
PR125	JEANS STITCH DENIM WAIST APRON	101
PR126	JEANS STITCH DENIM BIB APRON	101
PR127	'DOMAIN' CONTRAST DENIM BIB APRON	98
PR128	'DOMAIN' CONTRAST DENIM WAIST APRON	98
PR130	'CAUBRE' HEAVY COTTON CANVAS BIB APRON	106
PR131	'CAUBRE' HEAVY COTTON CANVAS WAIST APRON	106
PR132	'CHINO' BIB APRON	105
PR133	'CHINO' WAIST APRON	105
PR134	'DISTRICT' WAXED LOOK BIB APRON	97
PR135	'DIVISION' WAXED LOOK WAIST APRON	97
PR136	'DIVISION' WAXED LOOK BIB APRON WITH FAUX LEATHER	94
PR140	'ARTISAN' LEATHER CROSS BACK APRON	102
PR149	CHILDREN'S BIB APRON	115
PR150	'COLOURS' BIB APRON	108
PR151	'COLOURS' HALF WAIST APRON	111
PR154	'COLOURS' BIB APRON WITH POCKET	111
PR155	'COLOURS' THREE POCKET APRON	113
PR156	BISTRO WAIST APRON WITH POCKET	119
PR158	'COLOURS' LONG BAR APRON	113
PR159	'COLOURS' 2 IN 1 APRON	114
PR162	CONTRAST BIB APRON	117
PR165	ESSENTIAL BIB APRON	118
PR167	100% POLYESTER APRON	116
PR169	BISTRO WAIST APRON	119

TABARDS

PR171	LADIES' POCKET TABARD	128
PR172	LADIES' LONG POCKET TABARD	129
PR176	CONTRAST TABARD	130
PR177	LADIES' 'TULIP' WRAP AROUND TUNIC	131

SHIRTS, BLOUSES & TEE'S

PR200	MEN'S POPLIN LONG SLEEVE SHIRT	66
PR202	MEN'S POPLIN SHORT SLEEVE SHIRT	69
PR204	MEN'S POPLIN LONG SLEEVE FITTED SHIRT	70
PR206	MEN'S ROLL SLEEVE BAR SHIRT	77
PR214	MEN'S LONG SLEEVE FITTED FRIDAY BAR SHIRT	78
PR217	MEN'S CROSS-DYE ROLL SLEEVE BAR SHIRT	74
PR218	MEN'S LONG JOHN ROLL SLEEVE TEE	82
PR220	MEN'S MICROCHECK GINGHAM LONG SLEEVE SHIRT	63
PR221	MEN'S MICROCHECK GINGHAM SHORT SLEEVE SHIRT	64
PR222	MEN'S JEANS STITCH DENIM SHIRT	73
PR250	MEN'S MULLIGAN CHECK COTTON LONG SLEEVE SHIRT	56
PR254	MEN'S GINMILL CHECK COTTON LONG SLEEVE SHIRT	60
PR256	MEN'S LONG SLEEVE SIDEHILL CHECK COTTON SHIRT	59
PR300	LADIES' POPLIN LONG SLEEVE BLOUSE	66
PR302	LADIES' POPLIN SHORT SLEEVE BLOUSE	69
PR305	LADIES' POPLIN THREE QUARTER SLEEVE BLOUSE	70
PR306	LADIES' ROLL SLEEVE BAR SHIRT	77
PR314	LADIES' LONG SLEEVE FITTED FRIDAY BAR SHIRT	78
PR317	LADIES' CROSS-DYE ROLL SLEEVE BAR SHIRT	74
PR318	LADIES' LONG JOHN ROLL SLEEVE TEE	82
PR320	LADIES' MICROCHECK GINGHAM LONG SLEEVE SHIRT	63
PR321	LADIES' MICROCHECK GINGHAM SHORT SLEEVE SHIRT	64
PR322	LADIES' JEANS STITCH DENIM SHIRT	73
PR350	LADIES' MULLIGAN CHECK COTTON LONG SLEEVE SHIRT	56
PR354	LADIES' GINMILL CHECK COTTON LONG SLEEVE SHIRT	60
PR356	LADIES' LONG SLEEVE SIDEHILL CHECK COTTON SHIRT	59

WAISTCOATS

PR620	MEN'S HOSPITALITY WAISTCOAT	81
PR621	LADIES' HOSPITALITY WAISTCOAT	81
PR622	MEN'S LINED WAISTCOAT	81
PR623	LADIES' LINED WAISTCOAT	81

POLO SHIRTS

PR610	MEN'S STUDDED POLO	90
PR612	COOLCHECKER STUD POLO	91

PR615	COOLCHECKER MEN'S PIQUE POLO	86
PR616	COOLCHECKER LADIES' PIQUE POLO	86
PR617	LONG SLEEVE COOLCHECKER PIQUE POLO	90
PR618	MEN'S CONTRAST TIPPED COOLCHECKER POLO	89
PR619	LADIES' CONTRAST TIPPED COOLCHECKER POLO	89
PR630	MEN'S COOLCHECKER PLUS PIQUE POLO - COOLPLUS®	85
PR632	LADIES' COOLCHECKER PLUS PIQUE POLO - COOLPLUS®	85

TROUSERS

PR560	MEN'S PERFORMANCE CHINO JEAN	93
PR570	LADIES' PERFORMANCE CHINO JEAN	93
PR701	CLIP-ON TROUSER BRACES	93

CHEFSWEAR

CHEF'S JACKETS

PR656	SHORT SLEEVE CHEF'S JACKET	141
PR657	LONG SLEEVE CHEF'S JACKET	141
PR659	CHEF'S COOLMAX LONG SLEEVE JACKET	144
PR660	DENIM CHEF'S JACKET	135
PR661	'CUISINE' CHEF'S JACKET	144
PR664	STUDED FRONT SHORT SLEEVE CHEF'S JACKET	137
PR665	STUDED FRONT LONG SLEEVE CHEF'S JACKET	137
PR668	CHEF'S SHORT SLEEVE 'CULINARY' PULL ON TUNIC	143
PR669	CHEF'S LONG SLEEVE 'CULINARY' PULL ON TUNIC	143
PR670	LADIES' SHORT SLEEVE CHEF'S JACKET	138
PR671	LADIES' LONG SLEEVE CHEF'S JACKET	138

CHEF'S T-SHIRT

PR649	COOLCHECKER CHEF'S TSHIRT	147
-------	---------------------------	-----

CHEF'S TROUSERS

PR552	PULL ON CHEF'S TROUSER	146
PR553	ESSENTIAL CHEF'S TROUSER	146
PR554	CHEF'S SELECT TROUSER	146

CHEF'S ACCESSORIES

PR648	TURN-UP CHEF'S HAT	149
PR652	'CUISINE' CHEF'S JACKET STUDS	145
PR653	CHEF'S SKULL CAP	148
PR654	CHEF'S SCARF	149
PR658	CHEF'S ZANDANA	149

CHEF'S APRONS

PR102	COTTON BIB APRON	152
PR110	STRIPED BIB APRON	153
PR125	JEANS STITCH DENIM WAIST APRON	101
PR126	JEANS STITCH DENIM BIB APRON	101
PR150	'COLOURS' BIB APRON	151

INDEX

BEAUTY & HEALTH

BEAUTY TUNICS

PR681	'MIKA' FEATURE BUTTON TUNIC	165
PR682	'ORCHID' WRAP OVER TUNIC	161
PR683	'BLOSSOM' ASYMMETRIC BUTTON TUNIC	156
PR684	'PEONY' CONTRAST PANELED TUNIC	162
PR686	'CAMELLIA' ZIP TUNIC	158
PR687	'LILY' CONTRAST TUNIC	158
PR690	'ROSE' WRAP SATIN TRIM TUNIC	163
PR691	'IVY' CONTRAST TUNIC	164
PR693	'EPSOM' MEN'S WRAP TUNIC	167

BEAUTY TROUSERS

PR536	'IRIS' SALON TROUSER	166
-------	----------------------	-----

TABARDS & APRONS

PR150	'COLOURS COLLECTION' BIB APRON	171
PR159	'COLOURS' 2 IN 1 APRON	170
PR171	LADIES' POCKET TABARD	172
PR172	LADIES' LONG POCKET TABARD	172
PR176	CONTRAST TABARD	174
PR177	LADIES' 'TULIP' WRAP AROUND TUNIC	175

HEALTHCARE TUNICS

PR604	'VITALITY' HEALTHCARE TUNIC	177
PR605	'DAISY' HEALTHCARE TUNIC	178
PR609	'MAIVERN' MEN'S HEALTH TUNIC	176

HEALTH CARE TROUSERS

PR514	'POPPY' HEALTHCARE TROUSERS	177
-------	-----------------------------	-----




PREMIER®

UNIFORMS THAT WORK FOR YOU



BUSINESSWEAR
HOSPITALITYWEAR
CHEFSWEAR
BEAUTYWEAR

